

The I-84/I-91 Tunnel Proposal

A Solution for the Capital Region



(Source: Hartford Courant)

Beatrice Fox Auerbach was a remarkable woman with enormous influence

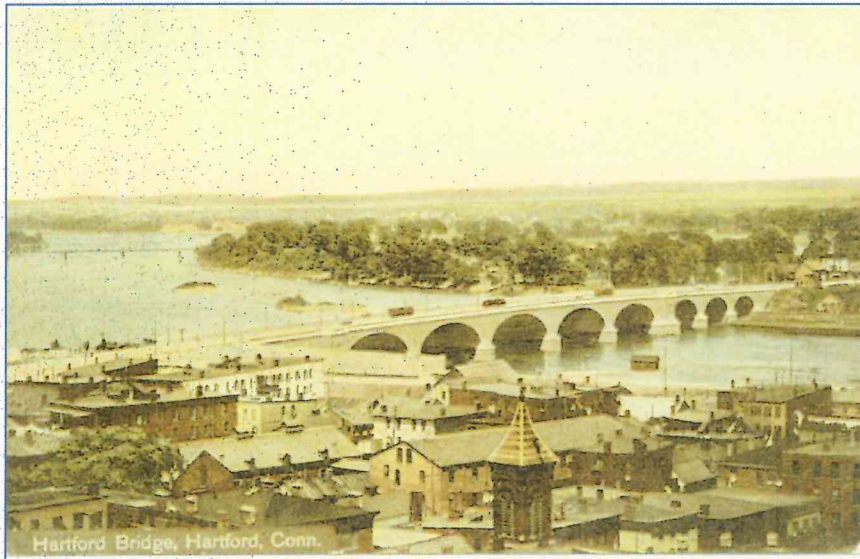


Beatrice Fox Auerbach with Eleanor Roosevelt circa 1947, Hartford

(Source: Hartford Courant)

I-84/I-91 Construction History

- The Bulkeley Bridge, the world's largest stone arch bridge, was built with a 100-year vision
- Over the last century, this area has experienced dramatic changes to its landscape



Front Street Neighborhood & Bulkeley Bridge, 1909

(Source: www.urbanplanet.com)

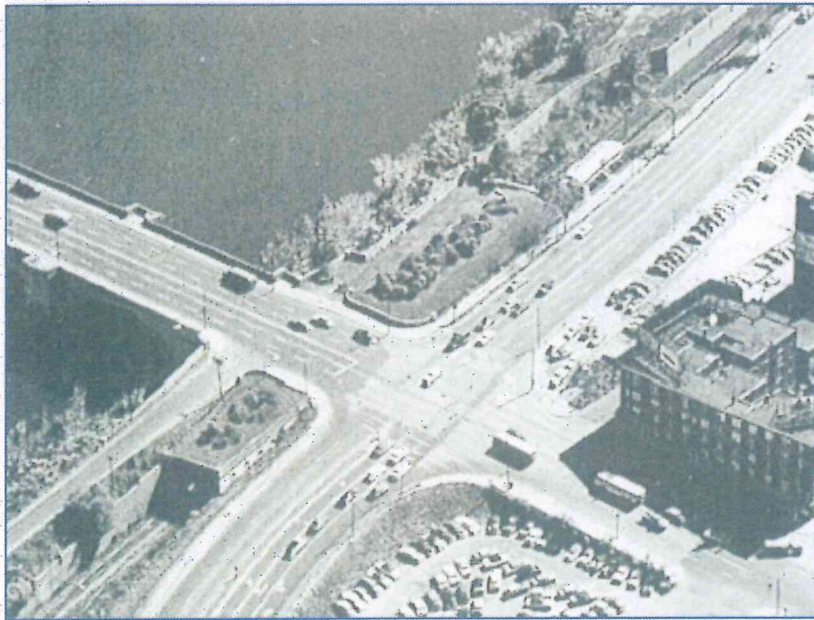


I-91 & I-84 "Morgan Street" Interchange, 2008

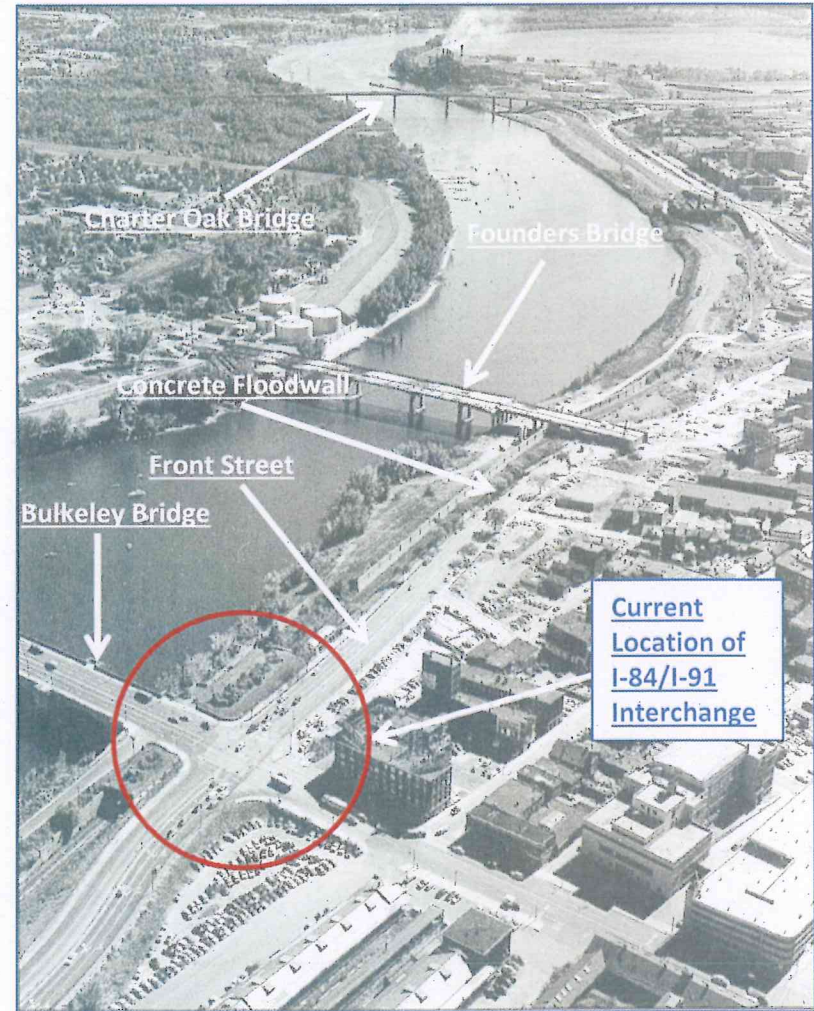
(Source: GEI Consultants, Inc.)

I-84/I-91 Construction History

- In response to the floods of 1936 and 1938, the US Army Corps constructed the levee system
- I-91 (seen here as Connecticut Blvd) has been lowered significantly, increasing the potential for levee underseepage



Detail Area of Future Interchange

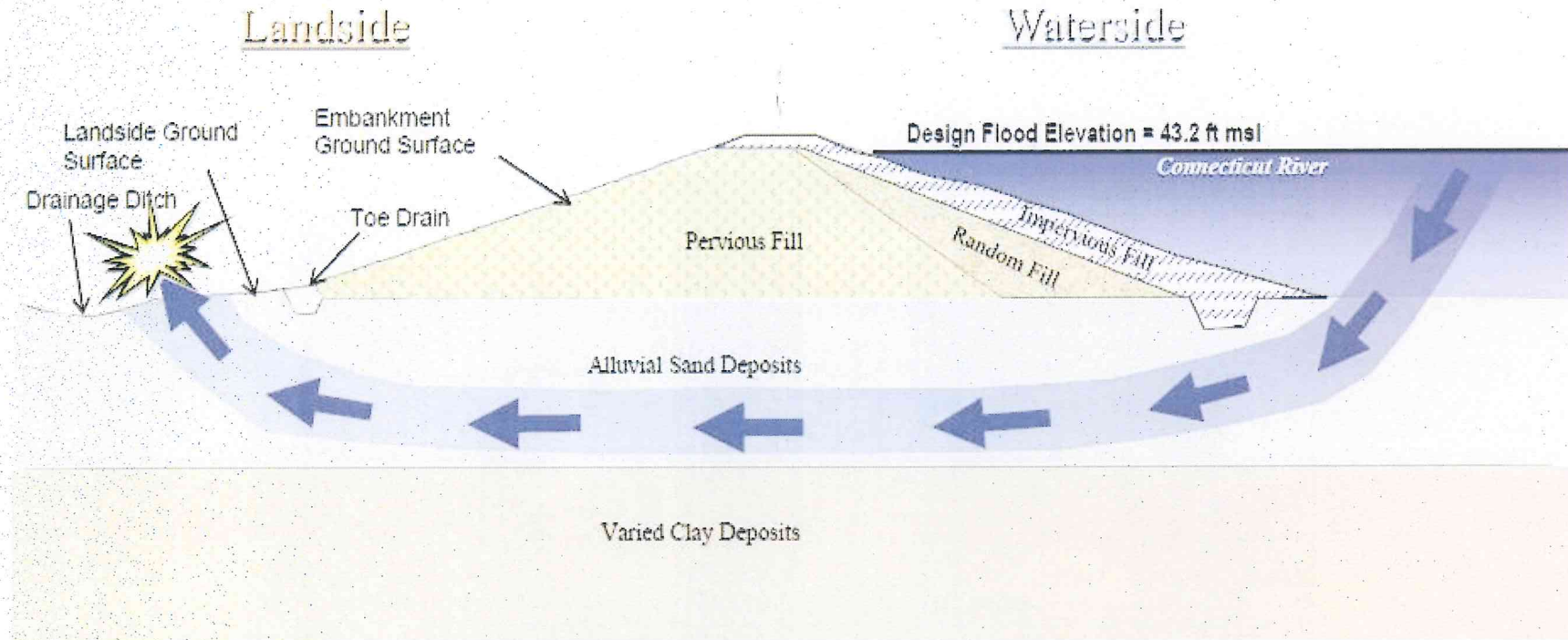


View of Bulkeley, Founders, and Charter Oak Bridges, 1957

(Source: Larned, Larry. (2002) *Images of America: Route 15, the Road to Hartford*. Arcadia Publishing, Inc)

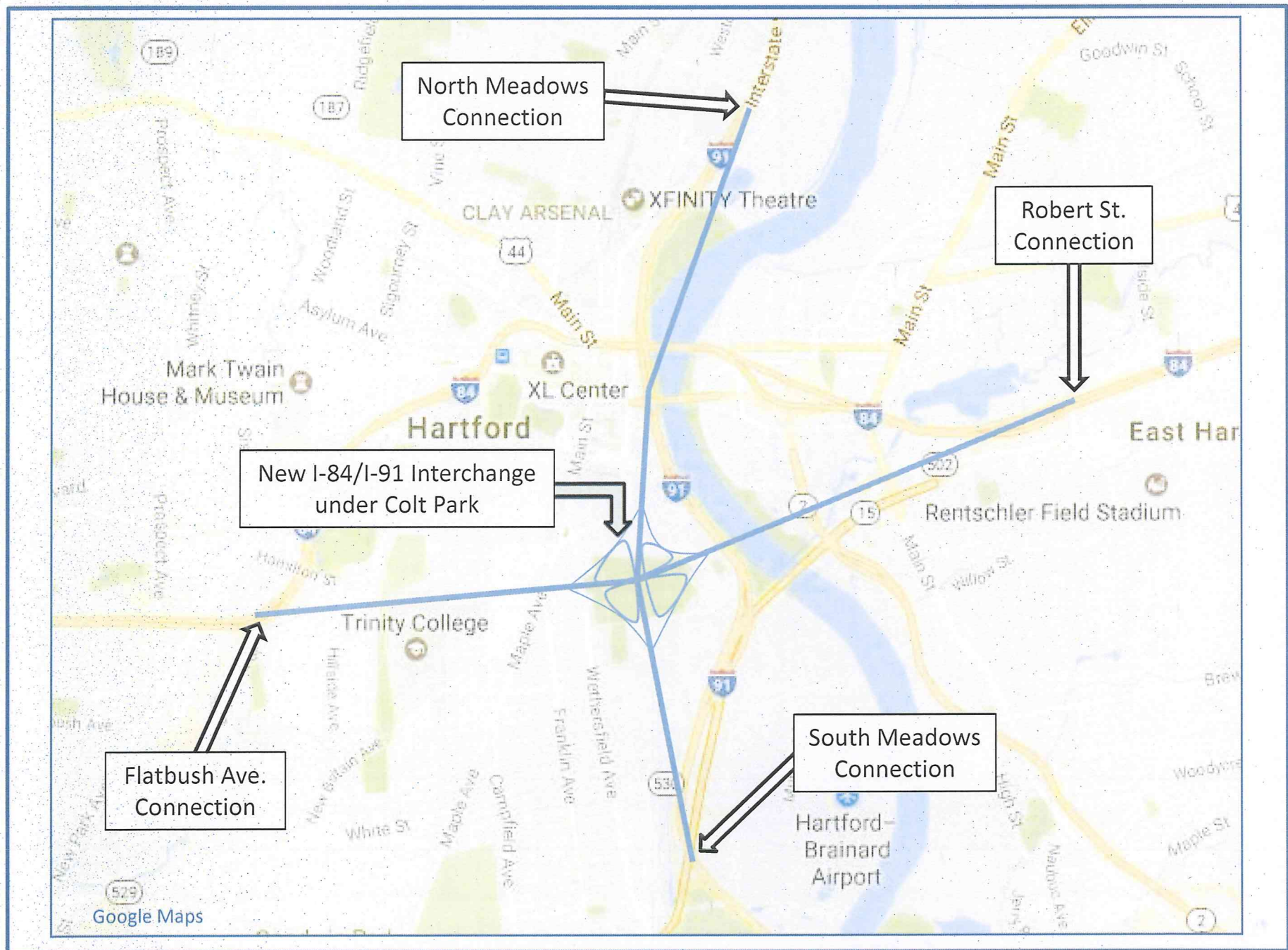
Underseepage/Sandpiping

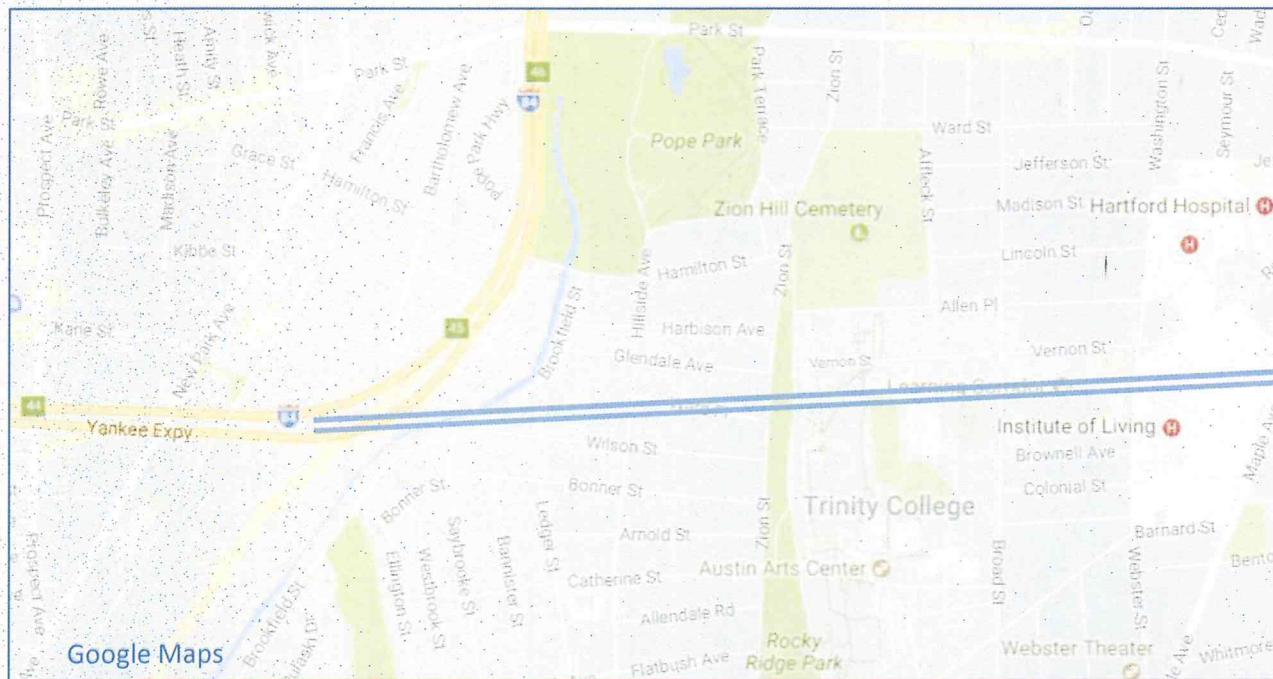
When water flows beneath the levee system through porous soils



Underseepage was determined to be the major cause of the levee failure in 9th Ward of New Orleans, LA during Hurricane Katrina

(Source: GEI Consultants, Inc.)



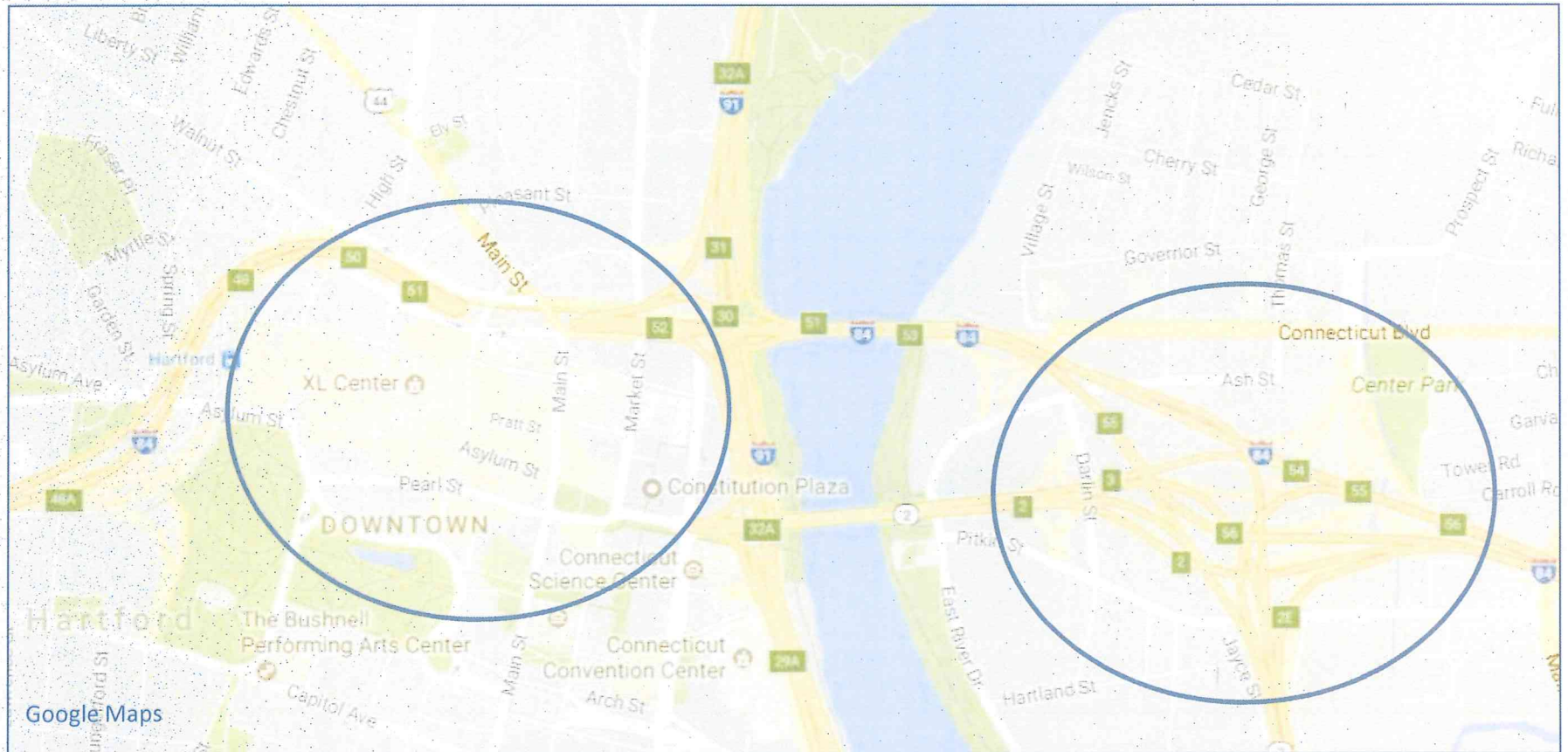


Flatbush Ave. Connection (Hartford)

Roberts Street Connection (E. Hartford)



Mixmaster/Downtown



The East Hartford Mixmaster is roughly the same footprint as Downtown Hartford

How Do You Pay For It?

The US DOT's Build America Bureau is responsible for driving transportation infrastructure development projects in the United States. The Bureau streamlines credit opportunities and grants by drawing upon the full resources of the department.

There are three core components of the Build America Bureau:

1. An Outreach and Project Development team will educate project sponsors about how they can best combine DOT credit, funding programs, and **public-private partnerships (P3)**.
2. A Credit Programs team that encompasses the **Transportation Infrastructure Finance and Innovative Act (TIFIA)**, **Railroad Rehabilitation and Improvement Financing (RRIF)**, and **Private Activity Bonds (PABs)** programs.
3. The **FASTLANE Grant Program** team, which will administer the application process for FASTLANE grants.

In addition to these federal transportation resources, project sponsors must also consider traditional and innovative project delivery approaches such as tolling, carbon taxing, infrastructure banks, etc.

Meetings

Aetna

Bank of America

Travelers Insurance

Riverfront Recapture

MetroHartford Alliance

Capitol Region Council of Governments

Hartford State Legislative Delegation

Hartford Hospital

Business for Downtown Hartford

Motor Transport Association of Connecticut

St. Francis Hospital

Trinity Health

CT River Valley Chamber of Commerce

Town of East Hartford

Business for Downtown Hartford

City of Hartford

Sunday Knowledge Group

Greater Hartford Flood Commission

CT Construction Industries Association

East Hartford Town Council

Supporters

MetroHartford Alliance

iQuilt

CT Construction Industries Association

CT Asphalt and Aggregate Producers Association

CT Road Builders Association

CT Ready Mixed Concrete Association

Travelers Insurance

Greater Hartford State Senate Delegation

Riverfront Recapture

Greater Hartford Flood Commission

St. Francis Hospital

Trinity Health

Sunday Knowledge Group

Motor Transport Association of Connecticut

CT River Valley Chamber of Commerce

CT Laborers' District Council

Current view



(Source: CT DOT)

Potential view



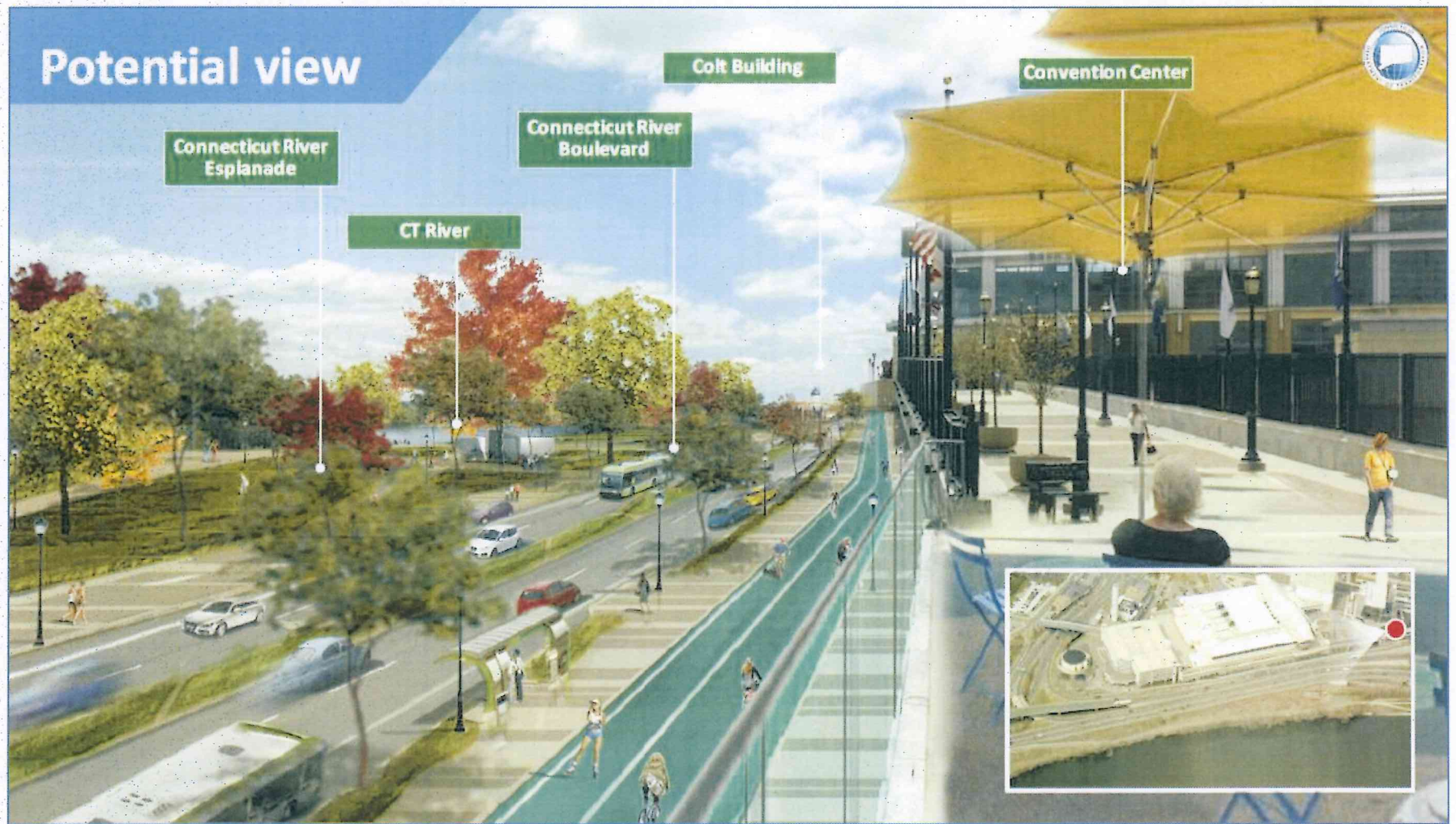
(Source: CT DOT)

Current view

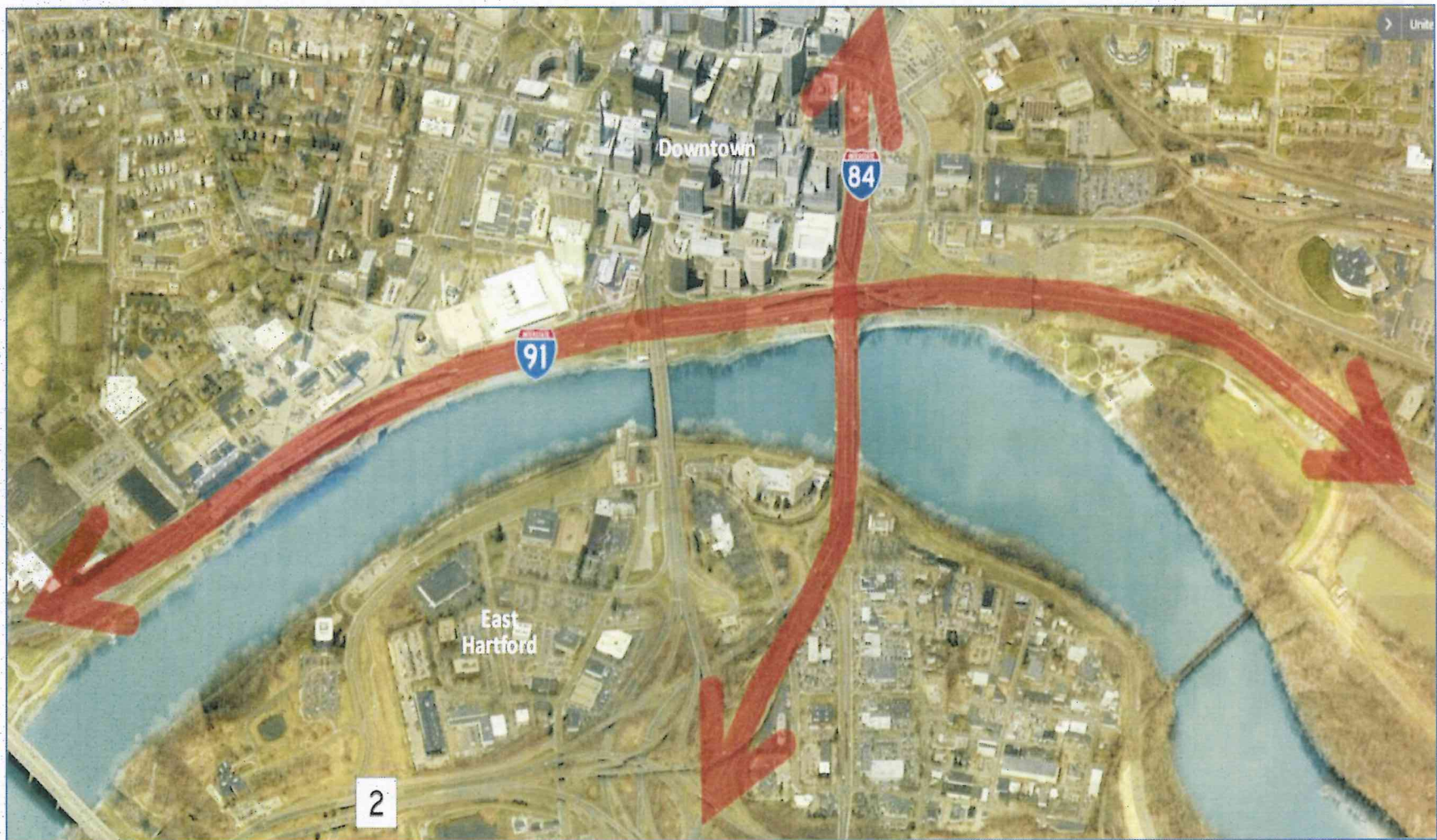


(Source: CT DOT)

Potential view



(Source: CT DOT)



(Source: CT DOT)



(Source: CT DOT)

END