

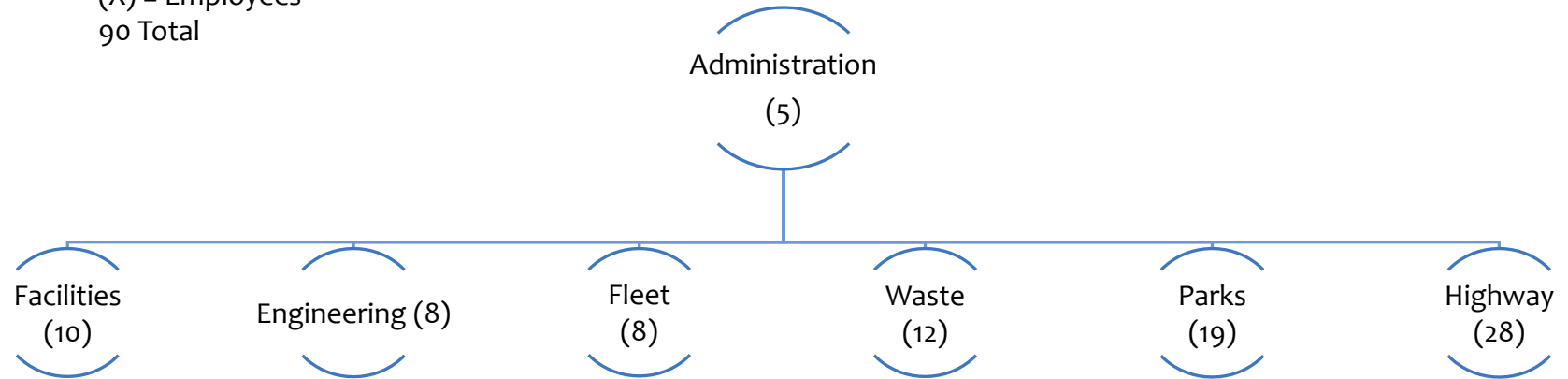
Town of East Hartford

2017 – 2018

Department of Public Works

Organization

(X) = Employees
90 Total



Responsibilities

- 151 miles (388 lane miles) of roads
- Over 400 vehicles
- 45 buildings (340,000 s.f.)
- 17,000 tons of waste
- 4 miles of levee
- 5,400 catch basins
- 1,600 manholes
- 380 drainage outfalls
- 5 cemeteries (45 acres)
- 5,000 street lights
- 17 bus shelters
- Property Maintenance of 67 locations (140 acres)
- 650 acres of recreation land
- 23 parks
- Over 9 miles of trails
- 12 playscapes
- 20 Little League baseball & softball fields
- 16 Outdoor basketball courts- 6 lighted
- 10 tennis courts
- 2 football fields
- 8 soccer fields
- Property Maintenance of 76 locations (260 acres)

Current Year Budget Reduction

Department's Assigned Target Value \$200,000

- Reduce unassigned Professional Services
- Defer equipment replacement
- Extend service frequencies
- Re-bid vendors and source aftermarket part use
- Reduce unassigned funding for materials, rentals, and repairs
- Operational changes
- Staffing vacancies

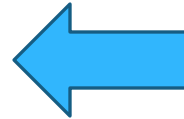
Administration Division

- Budget
- Overall Efficiency of Department
- Division Support
- Conduct of Department
- Tree Warden
- Town Committees
- Town's Representation to RPO



Document Management

- Oct. 2008 – Records Management Survey
- Department Needs Assessment
- Vendor Demos
- Presented to Council
- Current Funding
 - Development complete
 - Engineering nearing completion
 - I&P next
- Next Funding Phase
 - Offsite storage locations



Department Training

- Safety
- Regulatory Compliance
- Customer Service
- Electronic Ticket System
- New Employee Handbooks
- Division Operational Audits

2016 Snow Plow
Rodeo Winner



National Public Works Week



Engineering Division

- Design Services and Technical Support
- Commission Support
- Construction Inspection & Project Management
- Contract Development
- Mapping
- Encroachment Permits



Riverside Drive Reconstruction

CT DOT Road Safety Audit

- Participant Included State, Local, Consultant Members
- Identify Hazards
- Evaluate Traffic Movement
- Recommend Improvements
- Multi-modal Perspective
- Results in a Report for Both CTDOT and Local Use

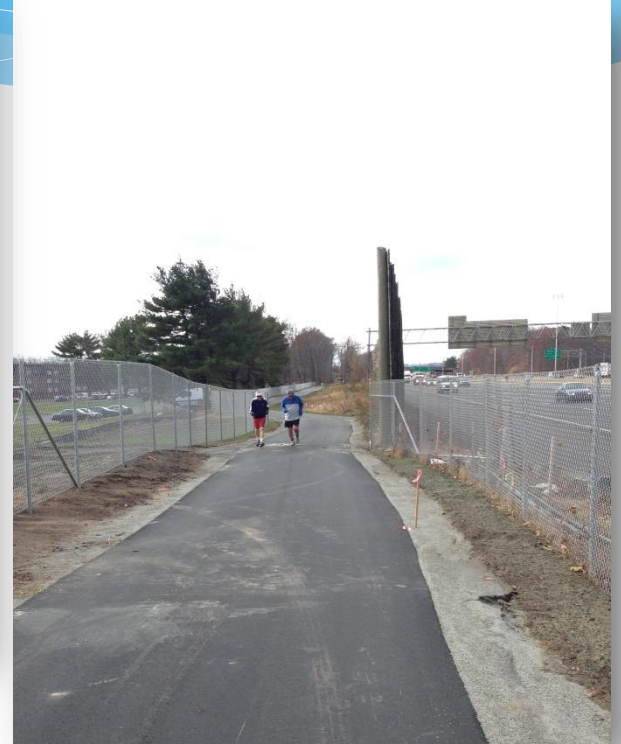
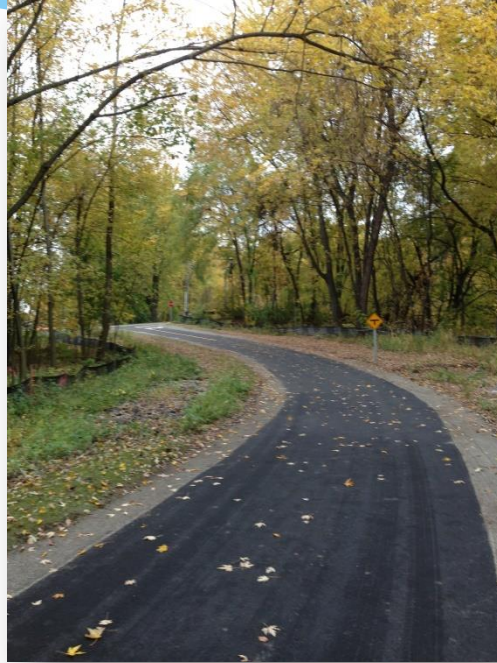


Road improvement program



2016 Construction

East Coast Greenway Multi-Use Trail



Ms4 permit requirements

- Illicit discharge detection and elimination program
- Ordinance and regulation changes
- Program to retrofit, repair, upgrade and replace structures and outfalls



Highway Services Division

- Operation and Maintenance of Streets
- Tree Maintenance
- Mowing
- Leaf Collection
- Flood Protection System
- Cemeteries
- Evictions
- 24-Hour Emergency Response
- Special Events

Flood Protection Drill -
Assembling Stop Log
Structure



Golf Course Improvements



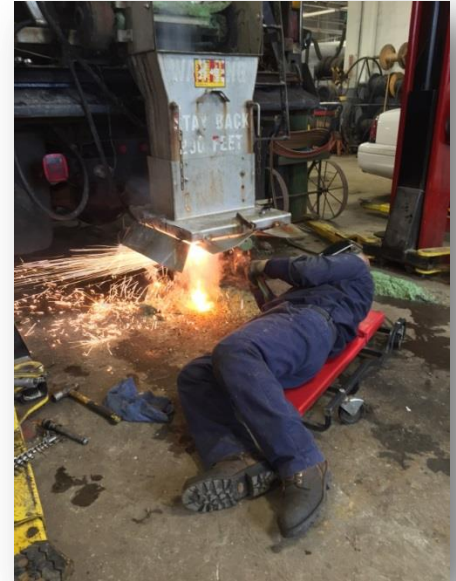
New Irrigation Well

Refurbished
Cart Paths



Fleet Services

- Maintenance and Repair of Town Vehicles
- Fuel Dispensing Systems



Facilities Division

- Building Maintenance Management
- Operation of Facilities
- Reconstruction, Demolition and Remodeling
- Building Security
- Carpentry Services
- 24-Hour Emergency Response
- Safety



Town Hall Improvements



Waiting Shelter



Probate Court Renovations



Inspections & Permits

Park Maintenance

- Parks & Trails
- Public Sidewalk Winter Maintenance
- Buildings & Grounds
- Pools
- Athletic Ballfields & Courts

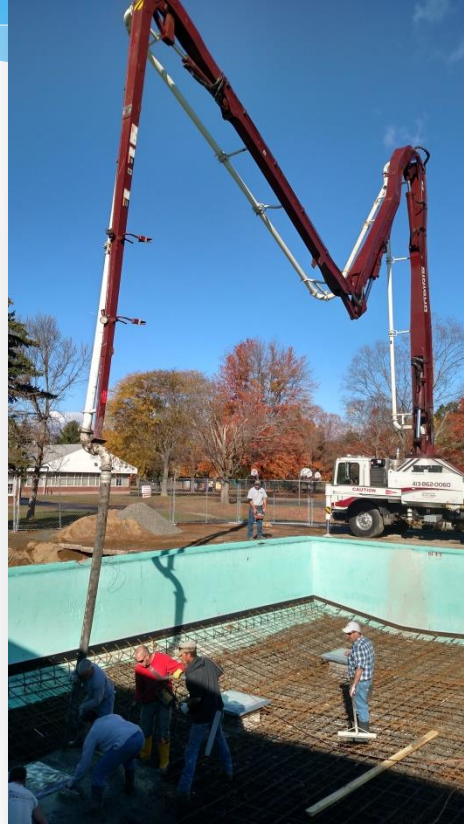


Park Improvements

Drennan Pool



Tennis Courts

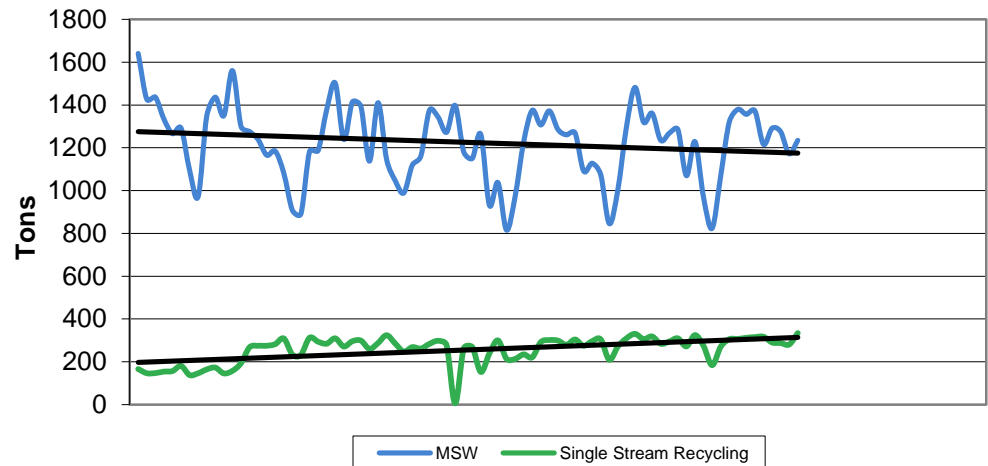


Labor Field Parking Lot

Waste Services Division

- Curbside Collection
- Waste & Recycling Collection at BOE and Other Town Facilities
- Recycling Center and Transfer Station
- Bulky Waste Collection
- Environmental Stewardship

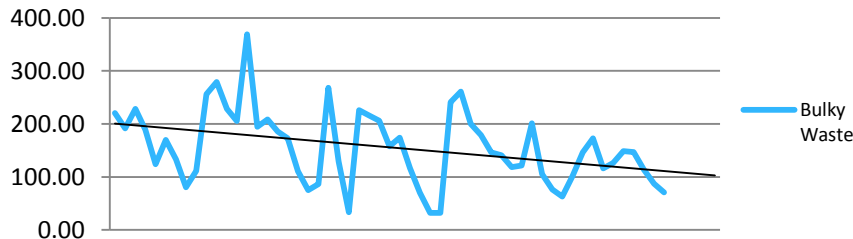
MSW & Single Stream Recycling
7/1/10 - 12/31/15



Managing Bulky Waste

- Curbside Education and Enforcement
- Permit System Revision
- Expanded Recycling
 - Mattresses, paint, textiles

Bulky Waste 7/2011 - 1/2017



TRASH

- ___ NO GRASS, LEAVES OR BRUSH IN TRASH CART
- ___ NO RECYCLABLE MATERIALS IN TRASH CART
- ___ MATERIAL UNACCEPTABLE FOR PICK UP IN CART

YARD WASTES

- ___ BRUSH MUST BE CUT TO CORRECT SIZE & SECURELY TIED
- ___ BAGGED LEAVES MUST BE BROUGHT TO TRANSFER STATION

RECYCLING

- ___ CARDBOARD SHOULD BE FLATTENED & PLACED IN RECYCLING CART
- ___ NO TRASH IN THE BLUE RECYCLING CART, USE GREEN TRASH CART
- ___ YOUR RECYCLING COLLECTION IS NEXT WEEK
- ___ PLACE SHREDDED PAPER IN PAPER GROCERY BAGS
- ___ NO PLASTIC BAGS IN THE RECYCLING CART

BULKY & METAL WASTES/APPLIANCES

- ___ PLEASE CALL 800-251-7267 TO SCHEDULE A PICK UP
- ___ MATERIALS UNACCEPTABLE FOR CURBSIDE PICKUP

CART PLACEMENT/USAGE

- ___ MATERIALS MUST BE PLACED IN THE CART FOR PICKUP
- ___ CARTS AND BULKY ITEMS MUST BE OUT BY 6:00 A.M.
- ___ PLEASE PLACE THE CART SO THAT IT IS CLEAR OF OBSTACLES, INCLUDING PARKED CARS, MAIL BOXES OR BURNERS
- ___ DO NOT OVERFILL OR JAM MATERIALS INTO THE CART
- ___ PLEASE PLACE TRASH AND RECYCLING CARTS AT LEAST 3 FEET APART
- ___ PLEASE TURN THE HANDLE AWAY FROM THE STREET
- ___ PLEASE PLACE CART ON LEVEL GROUND WITHIN 2 FEET OF THE CURB

OTHER

ADDRESS: _____

DRIVER INITIALS: _____ DATE: _____ M T W T F

QUESTIONS? PLEASE CALL 800-251-7267 OR VISIT THE WEBSITE www.easthertford.gov



Recycling Education

Thank you for coming to our
School and teaching us about
Recycling.
I learned that always recycling
helps animals not get hurt.
I recycle by putting paper in a
box to use again.



Hockanum
Elementary School



East Hartford
RECYCLES!



Reducing Bulky Waste

- 747 Additional permits issued
- 361 Ton reduction in bulky volumes
- 440 Additional ticket books purchased
- 23 Additional bulk pickups purchased
- More recycling options
- Savings includes increase in bulk tip fee

	FY 15	FY 16
Print Ticket Books	\$0.00	(\$1,180.00)
Print Reminder Notices	(\$164.15)	\$0.00
Mail Reminder Notices	(\$1,608.67)	\$0.00
Bulky Waste Tipping Fees	(\$164,207.25)	(\$133,535.00)
Permit Revenues	\$91,990.00	\$114,935.00
Extra Bulk Pickup Revenues	\$0.00	\$575.00
Extra Ticket Book Revenue	\$0.00	\$13,200.00
Total	(\$73,990.07)	(\$6,005.00)
	Savings =	\$67,985.07

Transfer Station Changes



Notice to Residents FREE Electronics Recycling

According to state law, Connecticut residents can recycle the following electronic items **FREE of CHARGE** at their local collection center:

- ✓ **Computers**
- ✓ **Monitors**
- ✓ **Printers**
- ✓ **Television**



Collection Site: East Hartford Transfer Station – Ecology drive
Hours: Monday, Tuesday and Friday, 7:15 a.m. to 11:55 a.m. and 12:30 p.m. to 2:45 p.m.
First and third Saturday of each month from 8:00 a.m. to 1:45 p.m.
Town contact: Diane Gompfer
(860) 291-7363 or dgompfer@easthartfordct.gov

For more information on recycling electronics, www.easthartfordct.gov/waste-services or www.ct.gov/depr/e-waste



FY 18 Increases/Decreases

	Administration	Engineering	Highway	Waste	Fleet	Facilities	Park Maintenance	Category Total	
60110 Perm Services	\$1,144	(\$3,108)	\$21,704	\$2,548	(\$7,207)	\$7,087	\$17,552	\$39,720	
Overtime		(\$1,500)						(\$1,500)	
Equip, Mat, & Sup		(\$4,260)	(\$800)		\$2,000		\$1,000	(\$2,060)	
Contracted Services		(\$4,500)	(\$1,800)	(\$3,000)	\$7,000	(\$1,260)	(\$2,000)	(\$5,560)	
Uniforms			\$600	\$100	\$100		\$200	\$1,000	
Heating			(\$5,000)			(\$5,000)		(\$10,000)	
Water			\$3,000			\$9,500	\$5,000	\$17,500	
Tip Fees				\$60,000				\$60,000	
Recycling				(\$16,000)				(\$16,000)	
Fuel					\$20,000			\$20,000	
Temporary Services							(\$15,000)	(\$15,000)	
	\$1,144	(\$13,368)	\$17,704	\$43,648	\$21,893	\$10,327	\$6,752		
							Department Total	\$88,100	

Departmental Challenges

- Doing more with less
- Aging workforce and resulting turnover
- Aging infrastructure & Equipment
- Limited Equipment Availability
- Limited Space
- Increasing Regulations

