

Town of East Hartford
2017 – 2018
Health and Social Services



James P. Cordier, Director

- MPH, University of Connecticut School of Medicine
- BA, Political Science, University of Connecticut
- U.S. Army Command and General Staff College
- JFK Special Warfare School
- Registered Sanitarian
- Regional Director, USDA WIC Program – 28 years
- Acting Director of Health, Town of Hebron – 12 years
- Past Chairman, Office of the State Child Advocate Advisory Committee – 6 years
- Past Chairman, Connecticut Commission on Children – 4 years; Member 15 years
- Past Chairman, Hebron Conservation Commission; founding member, Hebron Open Space and Land Acquisition Committee
- Justice of the Peace
- Councilman, Town of East Hartford – 1975 to 1978
- Founder, East Hartford Farmer's Market
- Lieutenant Colonel, United States Army (Retired)



Our Mission

Protect and Maintain East Hartford residents'

➤ Health

➤ Well-Being

➤ Self-Sufficiency

➤ Quality of Life

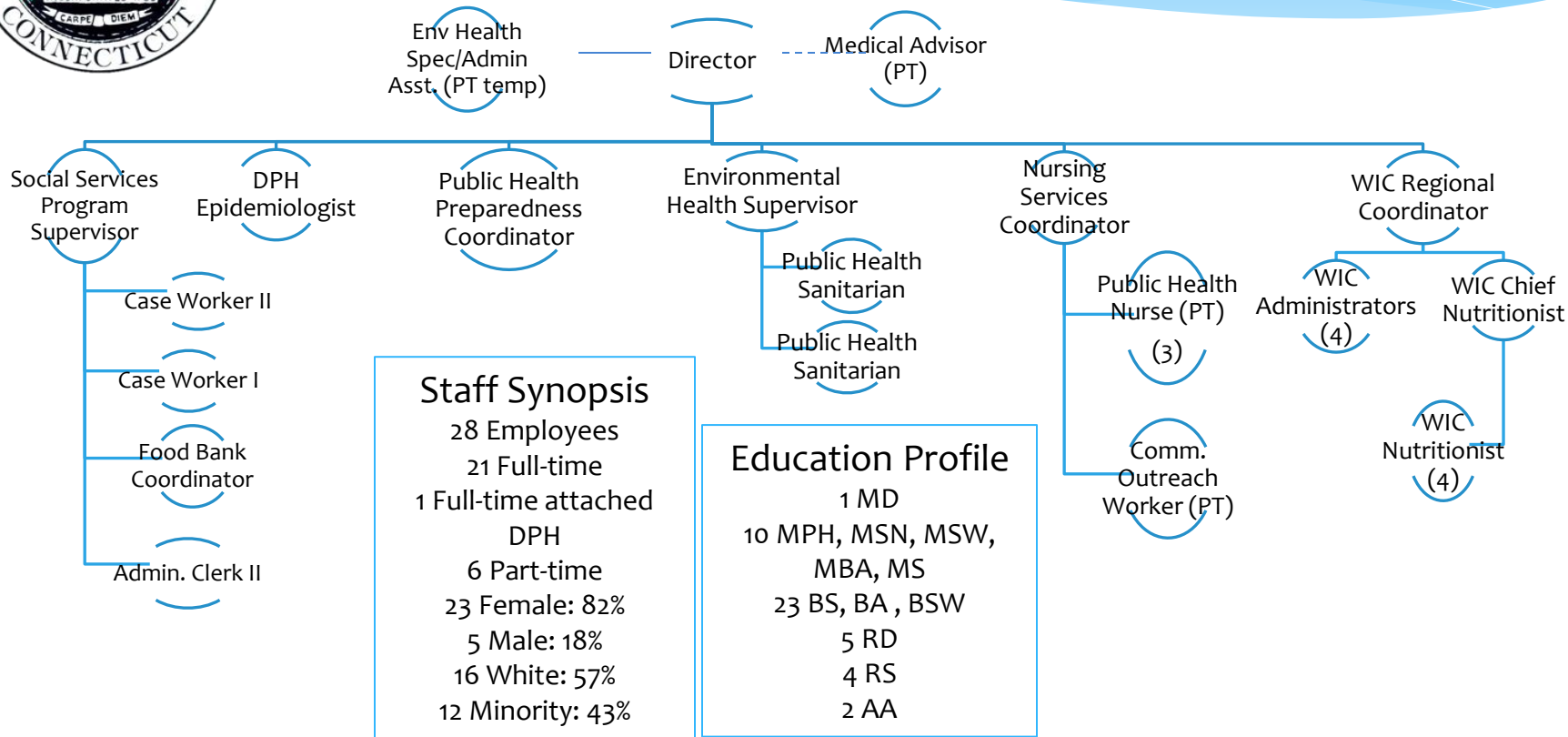


Our Responsibilities

- Environmental Health Activities
- Social Services
- Public Health Emergency Preparedness
- Nutrition Advocacy / Services
- Community Nursing Services
- Pest Mitigation and Control
- Health Education



Our Team





Health Services Highlights 2015-16

| Number | Activity | Type |
|--------|-----------------------|--|
| 488 | Inspections/Responses | Housing, Property Maintenance, Pools, Daycares |
| 448 | Inspections | Food Service |
| 360 | Vaccinations | Seniors/Town Staff |
| 15 | Investigations | Lead Poisoning and TB Cases |
| 4 | Large Containers | Disposed Outdated Medications |
| 1 | Farmer's Market | Successfully relocated to Raymond Library |
| 4,000 | Participants | WIC in 19 town area; 20,000 patient visits |



Food Service Inspections





Lead Inspection





Sewage Inspection



Mosquito Control Program





Pool Inspection





Strategic National Stock Pile POD Supply Exercise





Bedbug Education Program



National Breast Cancer Awareness Day

Senior Flu Clinic



Social Services Highlights 2015 -16



| | | |
|---------------|-----------------------|---------------------------------------|
| 2,759 | families | EH Food Bank System |
| 2,995 | individuals | Mobile Foodshare |
| 1,883 | people | Energy Assistance Program |
| 263 | households | Operation Fuel and Fuel Bank |
| 137 | students | School Supplies - Prefilled backpacks |
| 89 | children | Winter Coats (Rotary Club support) |
| 626 | children | Holiday Toys |
| 2,060 | people/families | Food - Thanksgiving |
| 1,574 | people/families | Food - Christmas |
| 12,386 | Total Impacted | |



FoodShare



25th Annual Farmer's Market



Christmas Toy Drive





Coats for Kids



WIC Nutrition Education Party





HEALTH AND SOCIAL SERVICES

SAVINGS THROUGH COST REDUCTIONS AND REVENUE INCREASES: FY 16-17

| HEALTH ADMINISTRATION DIVISION | |
|--|--------|
| Reduced # of Emergency Quarantine Cell Phones from 6 to 2 (February through June) | 399 |
| Increased WIC's Annual Rent from 17,640 per year to 21,600 per year | 3,960 |
| ENVIRONMENTAL HEALTH DIVISION | |
| Decreased Salary of a Sanitarian position by job sharing (March through June) | 593 |
| COMMUNITY NURSING SERVICES DIVISION | |
| DPH is reimbursing the Division for Tuberculosis case tracking, patient care coordination and Direct Observational Therapy | 12,500 |
| TOTAL | 17,452 |

HEALTH AND SOCIAL SERVICES

SAVINGS THROUGH COST REDUCTIONS AND REVENUE INCREASES: FY 17-18



| HEALTH ADMINISTRATION DIVISION | |
|--|--------|
| Reduced # of Emergency Quarantine Cell Phones from 6 to 2 | 950 |
| Increased WIC's Annual Rent from 17,640 per year to 21,600 per year | 3,960 |
| Reducing Subsidy to Intercommunity from 9,000 to 3,000 per year | 6,000 |
| ENVIRONMENTAL HEALTH DIVISION | |
| Decreased Salary of a Sanitarian position by job sharing | 1,796 |
| Additional Revenues through recent Licensure and Inspection Fee Schedule restructuring | 39,320 |

HEALTH AND SOCIAL SERVICES

SAVINGS THROUGH COST REDUCTIONS AND REVENUE INCREASES: FY 17-18



| COMMUNITY NURSING SERVICES DIVISION | |
|--|---------------|
| DPH is reimbursing the Division for Tuberculosis case tracking, patient care coordination and Direct Observational Therapy | 13,000 |
| Outsourcing Senior Flu Clinic to Protein Sciences | 6,000 |
| SOCIAL SERVICES | |
| Decreased Office Equipment LI by 880 | 880 |
| TOTAL | 71,906 |