

Public Library BUDGET PRESENTATION

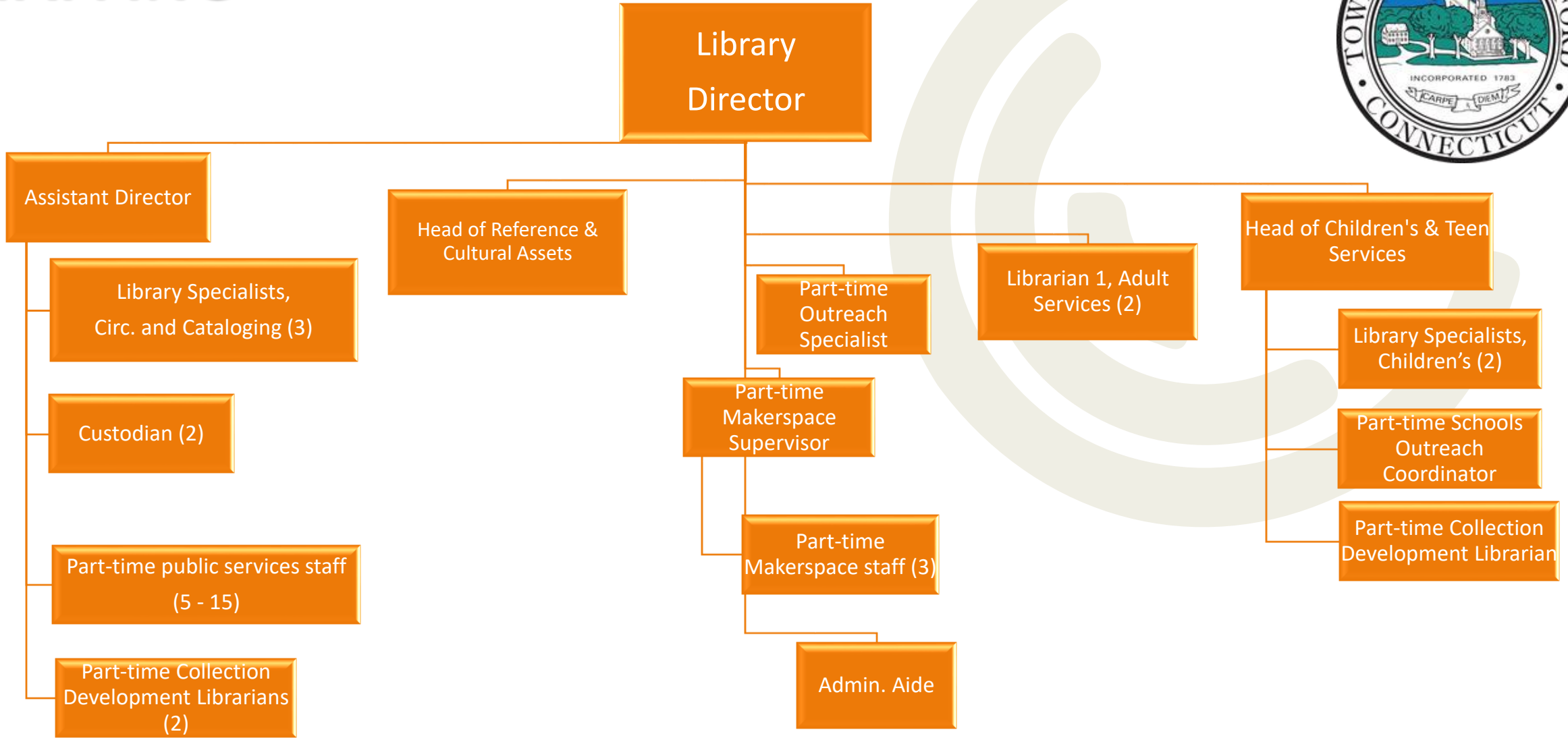
FY 2021-2022

➤ SARAH KLINE MORGAN

- Library Director since 2017
- BA, Cornell University
- MLS, Syracuse University
- 19 years of professional library experience, including positions in Farmington, Bloomfield, Cheshire, & New Britain
- Background in children's/teen services, community partnerships



STAFFING



14 full-time staff, 23 part-time staff

➤ DEPARTMENT DESCRIPTION & SERVICES

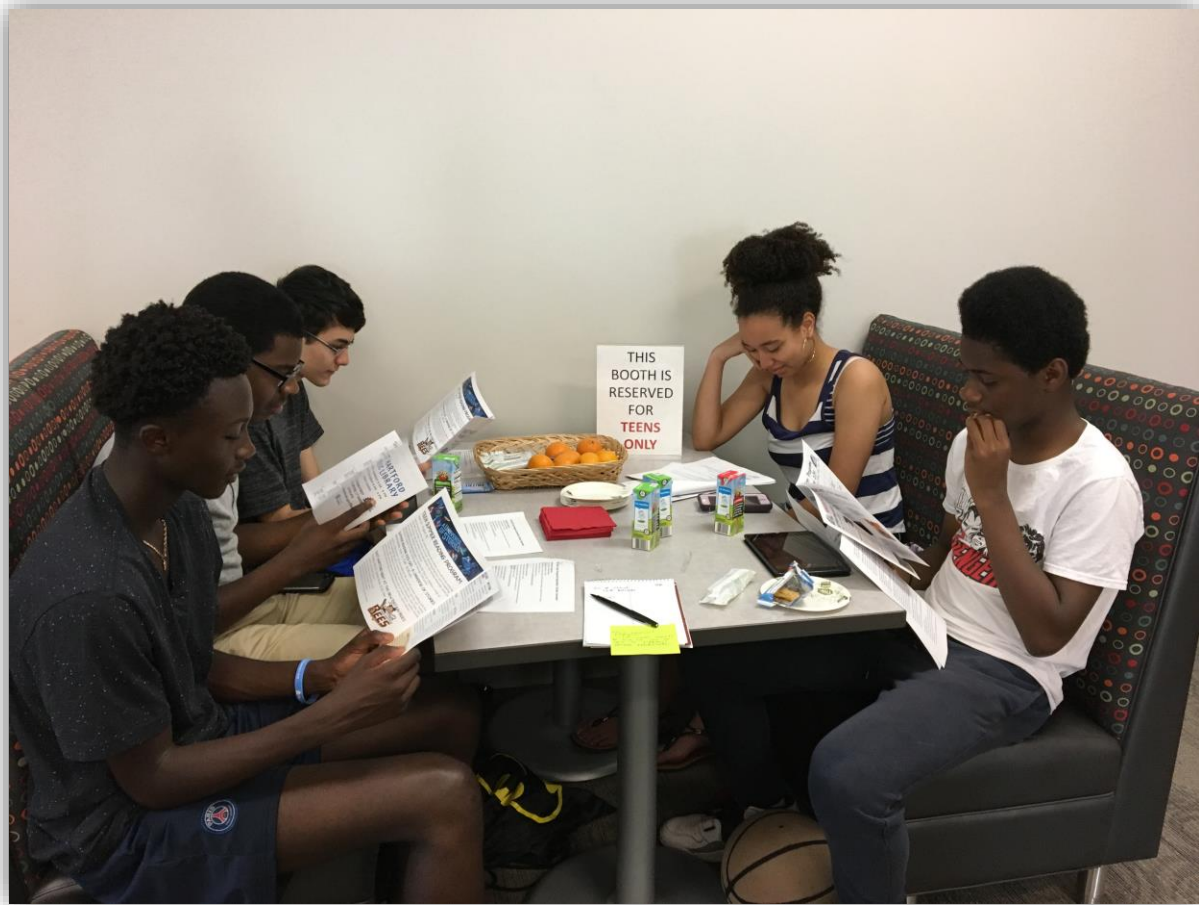


- Free and equal access to information
- Circulating collections in a variety of formats
- Learning Opportunities for all ages
- Technology access and instruction
- Programs for children, teens, and adults
- Access to cultural assets, including local history resources
- Gathering places for conversation, study, and to pursue educational and recreational interests

➤ JULY 2019 – FEBRUARY 2020



➤ JULY 2019 – FEBRUARY 2020



➤ JULY 2019 – FEBRUARY 2020



➤ COVID RESPONSE: MARCH 2020 - ➤



➤ COVID RESPONSE: MARCH 2020 - ➤



**All due dates for
library items
have been extended to
July 31st.**

No fines will accrue before this date.
Returns will only be accepted through our book
drop located in the Central Avenue parking lot.

Stay safe, and call the library with any questions.

#EASTHARTRESTART

860-290-4330 • www.easthartfordct.gov/library



➤ COVID RESPONSE: MARCH 2020 - ➤



➤ COVID RESPONSE: MARCH 2020 - ➤



➤ COVID RESPONSE: MARCH 2020 - ➤

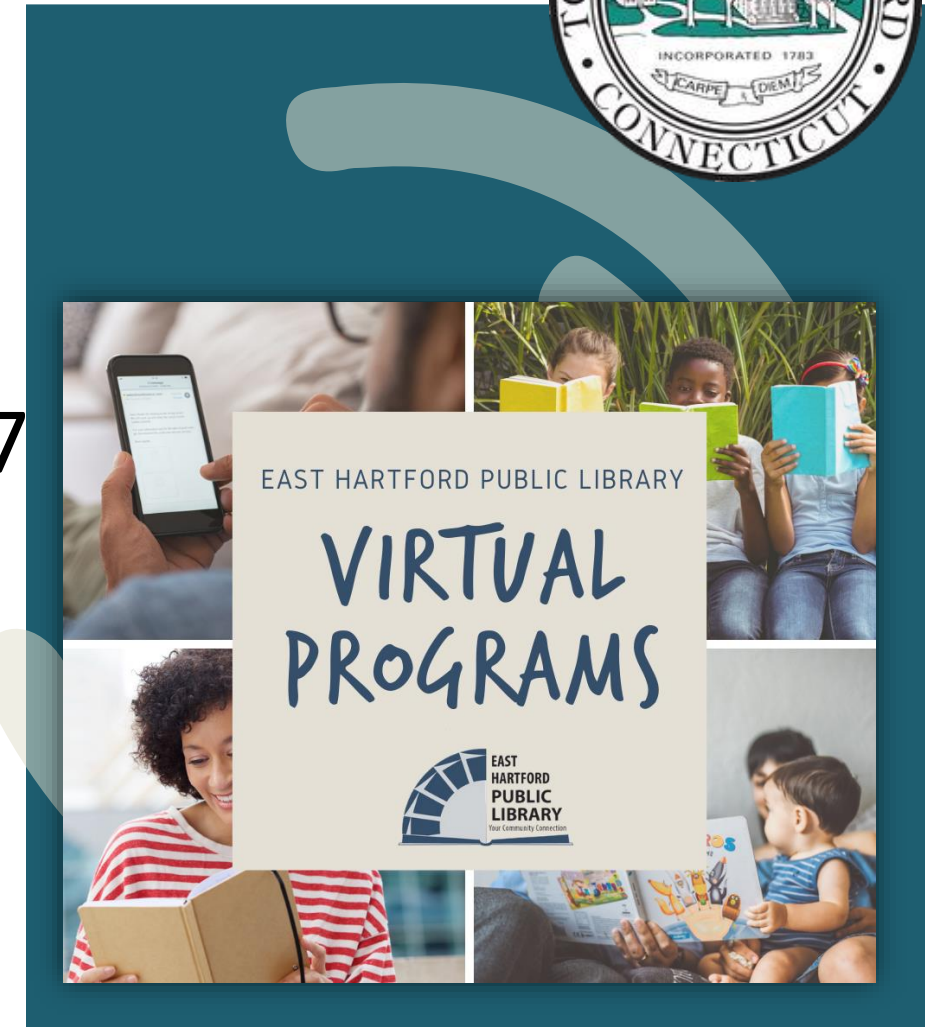


➤ ACHIEVEMENTS & ACCOMPLISHMENTS



Key Statistics, FY 2020

- New library cards issued: 1,181
- Items borrowed: 71,130
- E-books/audiobooks borrowed: 9,247
- YouTube views: 2,469
- Reference questions: 5,418
- Tech help questions: 5,886



➤ ACHIEVEMENTS & ACCOMPLISHMENTS

FY21 to date

- Everybody Learns grant-funded improvements in progress (\$45,124)
- Virtual programs attendance: 628
- Items borrowed: 21,464
- Reference questions: 606
- Tech help questions: 716
- Book selection service requests: 130



➤ BUDGET CHANGES

ORG	OBJECT	DESCRIPTION	REASON	\$ CHANGE
G2400	60110	Permanent Services	Contractual increases	\$14,325
G2400	62213	Dues and Subscriptions	Decrease associated with adoption of no-cost staff scheduling software and lower-cost calendar software	(\$1,400)
G2400	62346	Cleaning Supplies	Increase associated with COVID-19 cleaning protocols	\$1,000
G2400	63231	General Maintenance	Increase in known service costs, and to account for anticipated repair/replacement costs	\$3,500
G2400	63390	Library Connection	Decrease in consortium fees due to new assessment formula	(\$3,893)
G2400	63308	Library Programs	Decrease associated with COVID-19 limits on programming	(\$1,000)
G2400	63312	Small Business/Financial Literacy	New line to support new programs	\$1,000



THANK YOU!