



Public Health
Prevent. Promote. Protect.

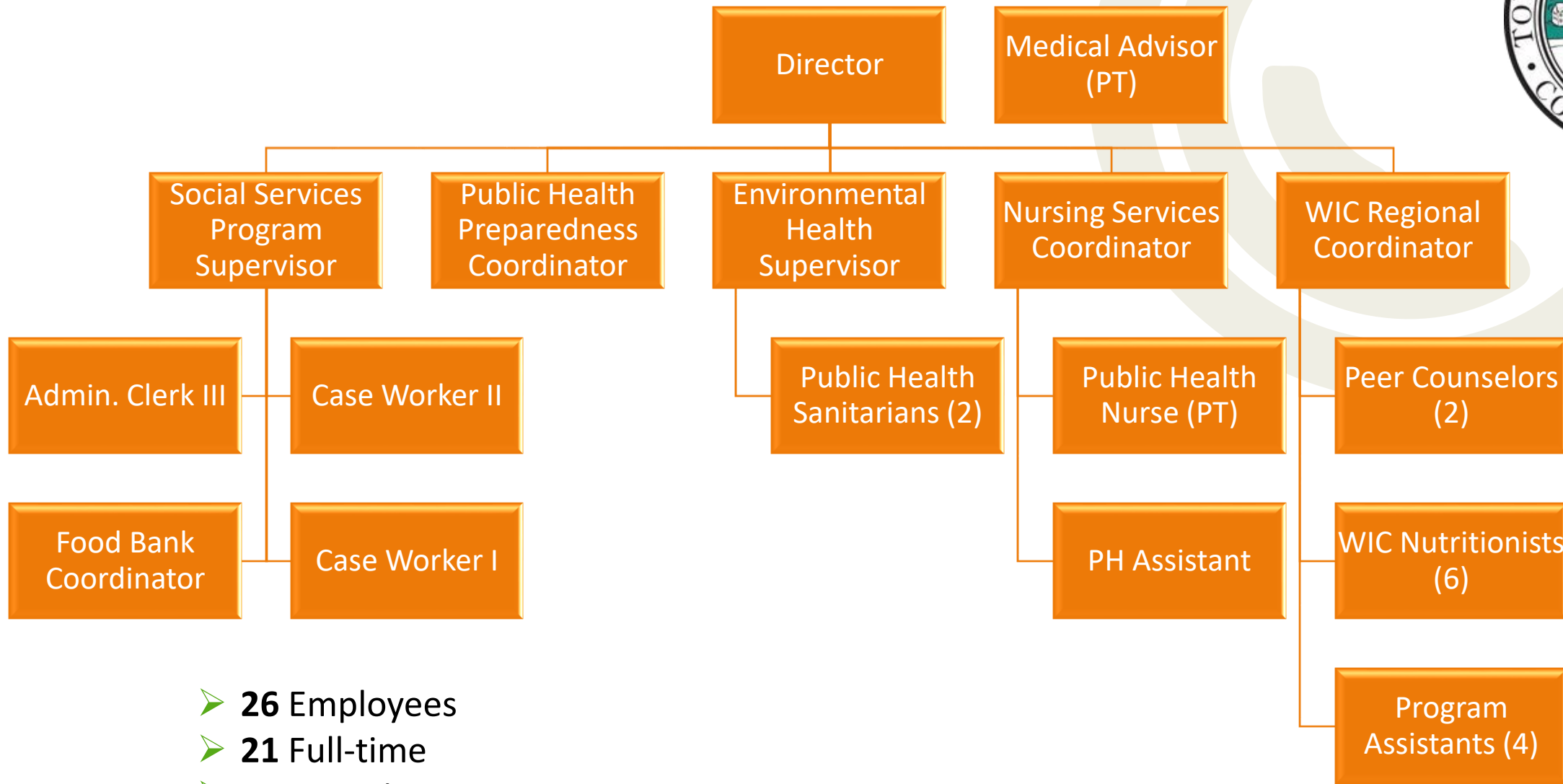
Health & Social Services BUDGET PRESENTATION FY 2021-2022

➤ LAURENCE J. BURNSED

- Appointed as Director of Health & Social Services on November 30, 2020
- Master of Public Health, Florida A&M University
- Bachelor of Science in Dietetics from Florida State University
- Currently enrolled in the University of Oklahoma's Master of Business Administration program for professionals, completion expected May 2021
- Background includes 20 years of experience with the Oklahoma State Department of Health; positions included Director of the Communicable Disease Division, Deputy Commissioner of Prevention & Preparedness Services, and State Epidemiologist. Also served as Regional Director of Emergency Preparedness for Mercy Health.



STAFFING



- **26** Employees
- **21** Full-time
- **5** Part-time



➤ DEPARTMENT DESCRIPTION & SERVICES



The mission of the East Hartford Health Department is to protect and promote the health and well-being of East Hartford residents through disease investigation, injury prevention, environmental protection, social services delivery, and public health preparedness.

- Health Administration Core Functions:
 - Oversight and direction of the Public Health and Social Services
 - Coordinate the Town's response to disease outbreaks, large-scale public health events, pandemics, and emergency preparedness activities
 - Serve as the department representative to advocate for implementation of evidence-based programs that serve the needs of East Hartford



➤ GRANTS FOR PUBLIC HEALTH SERVICES

Health Administration oversight of several grants



- COVID-19 Crisis Cooperative Agreement
 - Supported overtime for staff COVID-19 response
- Epidemiology & Laboratory Capacity Cooperative Agreement
 - Contract tracing staff and full-time public health nurse for COVID-19 clinical services
- Public Health Emergency Preparedness Grant
 - Preparedness Coordinator for public health planning and response



➤ DEPARTMENT DESCRIPTION & SERVICES

WOMEN, INFANTS, AND CHILDREN (WIC)

Regional team serves a 19 town territory to provide nutrition and peer counseling services to low-income women, infants, and children up to 5 years of age

- Maintain a case workload of >3,500 clients
- Benefits issues to >18,000 individuals in the past year through remote services (88% response rate)
- Client referrals to Town programs conducted by Libraries, Social Services, Parks & Recreations, and local head start programs



WIC Nutritionists meeting a Breastfeeding Mom in the parking lot to issue a Breast pump



➤ WIC SERVICES IN THE ERA OF COVID-19



East Hartford Peer on the phone helping an exclusively Breastfeeding Mom of Twins.



WIC Nutritionist meeting a WIC Dad in the parking lot to pick up a new EWIC card.



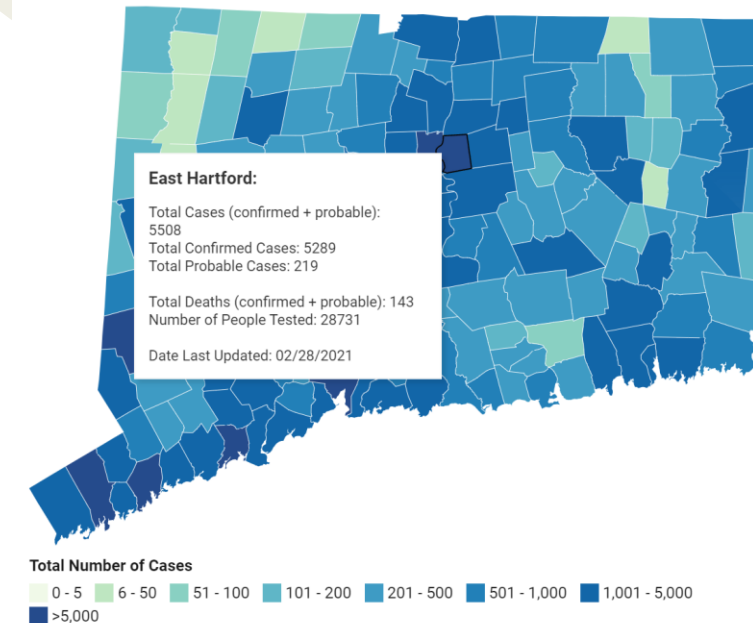
➤ COVID-19 RESPONSE ACTIVITIES

- COVID-19 Town Policy development
 - Mitigation, isolation/quarantine, mask use guidance, contact tracing
- Analysis of community case trends and vaccination clinic data
- Oversight of HD case investigation, contact tracing, and clinic operations
- Planning and operations coordination with local health jurisdictions and State Department of Public Health
- Collaboration with EH Public Schools on protocol implementation and reopening guidance
- General public communication and media interaction
- Hartford Marathon Foundation Health Advisory Committee representation



Cumulative Number of COVID-19 Cases by Town

Click Town for Additional Information



➤ DEPARTMENT DESCRIPTION & SERVICES

PUBLIC HEALTH NURSING SERVICES



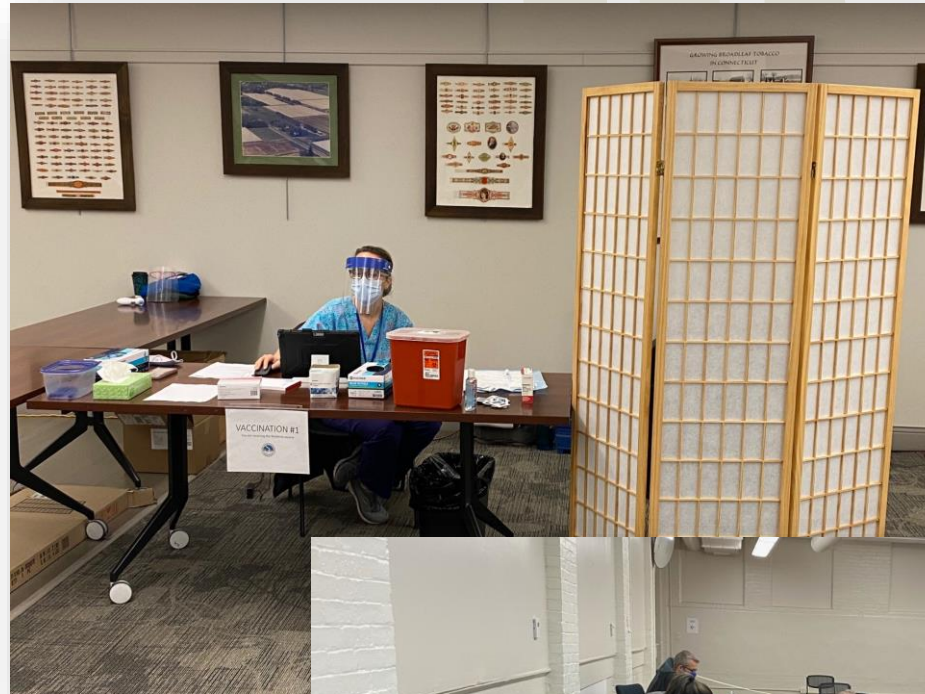
- Adult influenza vaccine clinics
- Communicable/Reportable Diseases – surveillance and investigation
- Childhood Lead Poisoning Prevention and Control
- Community Outreach
 - “Matter of Balance” fall prevention for senior citizens,
 - “Live Well with Diabetes”,
 - Participation in the East Hartford Health and Wellness Advisory Council and Executive Committee, and
 - “Change the Script” campaign opioid abuse prevention



➤ PH NURSING COVID-19 RESPONSE



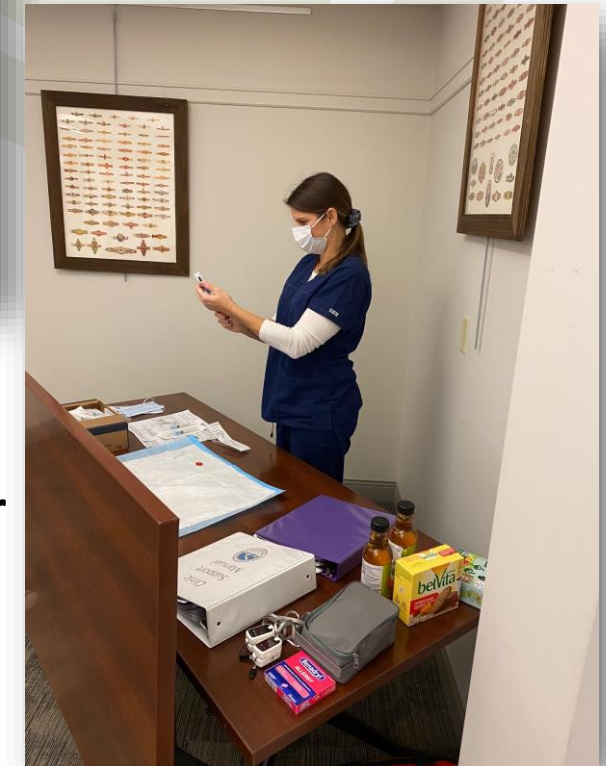
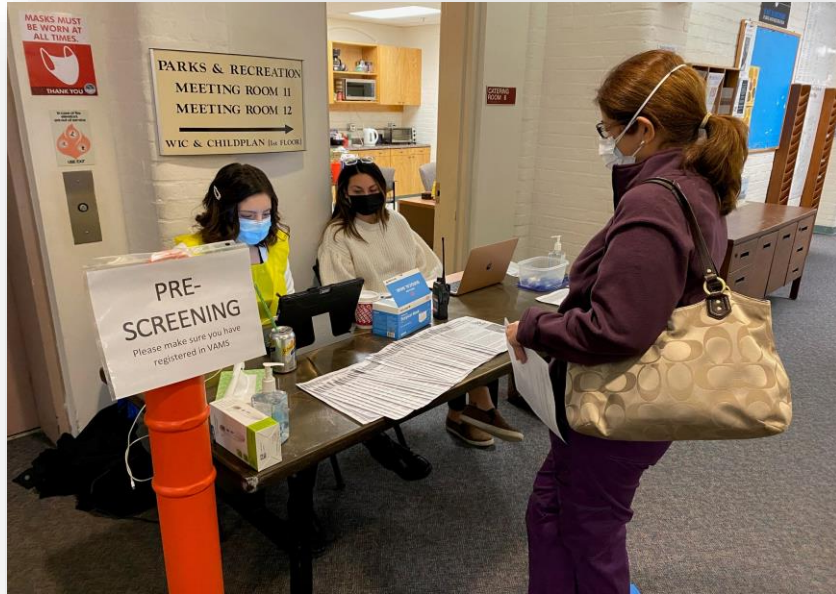
- Case investigation and contact tracing
- Testing, quarantine and isolation guidance consultation for Town Departments, schools and the EH businesses
- Vaccination clinic planning and operations
 - Nursing protocol development
 - Complete DPH-mandated trainings and plan submission
 - Assure cold chain transport and storage of COVID-19 vaccines
 - Coordinate clinical services teams at clinics



➤ INFLUENZA IMMUNIZATION CLINICS



➤ COVID-19 IMMUNIZATION CLINICS



- Vaccinations began Jan 2021
- Clinic sites at South End Senior Center and Cultural Center
- Targeted outreach and education



➤ PUBLIC HEALTH NURSING BY THE NUMBERS



**4 HOME VISITS AND 8
VIRTUAL VISITS FOR TB
DIRECTLY OBSERVED THERAPY**



**INVESTIGATION OF 3,159
COVID-19 CASES AND 894
CLOSE CONTACTS**



**365 FLU VACCINATIONS AND
MORE THAN 1,300 COVID-19
VACCINATIONS TO DATE**



**60 CASE MANAGEMENT
INCIDENTS FOR 22 CASES OF
CHILDHOOD LEAD POISONING**

➤ DEPARTMENT DESCRIPTION & SERVICES

ENVIRONMENTAL SERVICES



- Licensure, inspection, and education of food service establishments
- Address environmental health complaints in a timely manner and according to local ordinances and CT Public Health Code
- Lead poisoning investigation and prevention
- Licensing and regular inspection of public swimming facilities
- Environmental inspections of day care centers.
- Ensure that subsurface sewage system installations and repairs are in compliance with the technical standards.
- Mosquito control programs



➤ ENVIRONMENTAL SERVICES



- Food service inspections
- Lead inspections
- Sewage inspections
- Pool inspections





➤ ENVIRONMENTAL COVID-19 RESPONSE

- COVID-19 education for businesses on sector rules
- Sector rule enforcement with EH Police Department
- Environmental cleaning and disinfection consultation
- Business outbreak response with nursing staff
- Vaccination clinic staffing

Sector	Status	Notes
Amusement parks	Open	Must follow sector rules
Bars	Closed	
Beaches (state)	Open	Must follow safety guidelines
Beaches (town)	Partially Open	Check with individual town or review this list from DEEP
Bowling alleys	Open	Must follow sector rules
Construction	Open	Must follow safe workplace rules
DMV	Partially Open	- All deadlines for IDs and other credentials extended 180 days [info] - In-person services require an appointment - Select services can be completed online
Gyms and Fitness Studios	Open	Must follow sector rules
Hair Salons and Barbershops	Open	Must follow sector rules
Hotels	Open	Must follow sector rules
Libraries	Open	Must follow sector rules
Nail salons	Open	Must follow sector rules
Manufacturing	Open	Must follow safe workplace rules
Museums and zoos	Open	Must follow sector rules
Offices	Open	Must follow sector rules
Retail	Open	Must follow sector rules
Restaurants	Open	Must follow sector rules
School (PreK-12, summer)	Open	Must follow summer rules



➤ ENVIRONMENTAL HEALTH BY THE NUMBERS



**367 FOOD SERVICE
INSPECTIONS**



447 COMPLAINT ACTIONS



**9 TEMPORARY EVENTS
LICENSED**



21 POOL INSPECTIONS

➤ DEPARTMENT DESCRIPTION & SERVICES

SOCIAL SERVICES



- Benefits counseling and assistance in accessing programs such as Temporary Assistance for Needy Families, SNAP (Food Stamps)
- Short-term case management for individuals and families in need of someone to coordinate inter-agency services on their behalf
- Assistance with challenges including evictions, homelessness, and other emergencies
- Energy assistance: East Hartford fuel bank and operation energy programs
- Administration of food banks and site coordination for two of the four Mobile Foodshare locations in town
- Administration of tax relief programs





➤ SPECIAL PROGRAMS & EVENTS

- Thanksgiving basket distribution
- Christmas toy drive
- Back-to-School Shoe program



➤ SOCIAL SERVICES BY THE NUMBERS



3,325 households served by Mobile Foodshare



1,995 households used Energy Assistance Program



81 households used Operation Fuel Program



130 students received gift cards for Back-to-School shoes



Responded to 38 Emergency relocations



720 local children less than 11 years of age provided new Christmas toys



886 Thanksgiving food baskets feeding 2,057 individuals



887 Holiday food baskets Feeding 1,096 individuals

➤ ACHIEVEMENTS & ACCOMPLISHMENTS



- COVID-19 response
 - Timely case investigation and contact tracing
 - Implementation of vaccination strategic plan with strike team and community clinic models
- Delivery of social services programs with COVID-19 precautions
- Development and implementation of an online foodservice licensing application and renewal system
- Successful transition of WIC services to virtual platforms and social distancing precautions



➤ DEPARTMENT CHALLENGES



- Uncertain state and federal financial support for required pandemic response programs
- COVID-19 pandemic's impact on population health and well-being
 - Delayed access to preventive health services (childhood lead screening, cancer screening, management of underlying medical conditions)
 - Increase in opioid and other substance abuse



➤ BUDGET SUMMARY



- Only changes to Health Department & Social Services Town funding for FY2021-22 are staff contractual increases
- Similar program activities compared to FY2020-21
- Recent staff additions supported by federal grants (Public Health Emergency Preparedness, Epidemiology & Laboratory Capacity grants)
- New initiative: Associated costs included in IT Department budget
 - Support and development of environmental services web-based licensing platform



➤ BUDGET CHANGES



ORG	OBJECT	DESCRIPTION	REASON	\$ CHANGE
G9100	60110	Permanent Services	Contractual Health & Social Services Director position	\$14,008
G9200	60110	Permanent Services	Contractual Community Health & Nursing	\$1,161
G9300	60110	Permanent Services	Contractual Environmental Health	\$4,677
G9400	60110	Permanent Services	Contractual Social Services	\$8,531





Public Health
Prevent. Promote. Protect.

Questions?