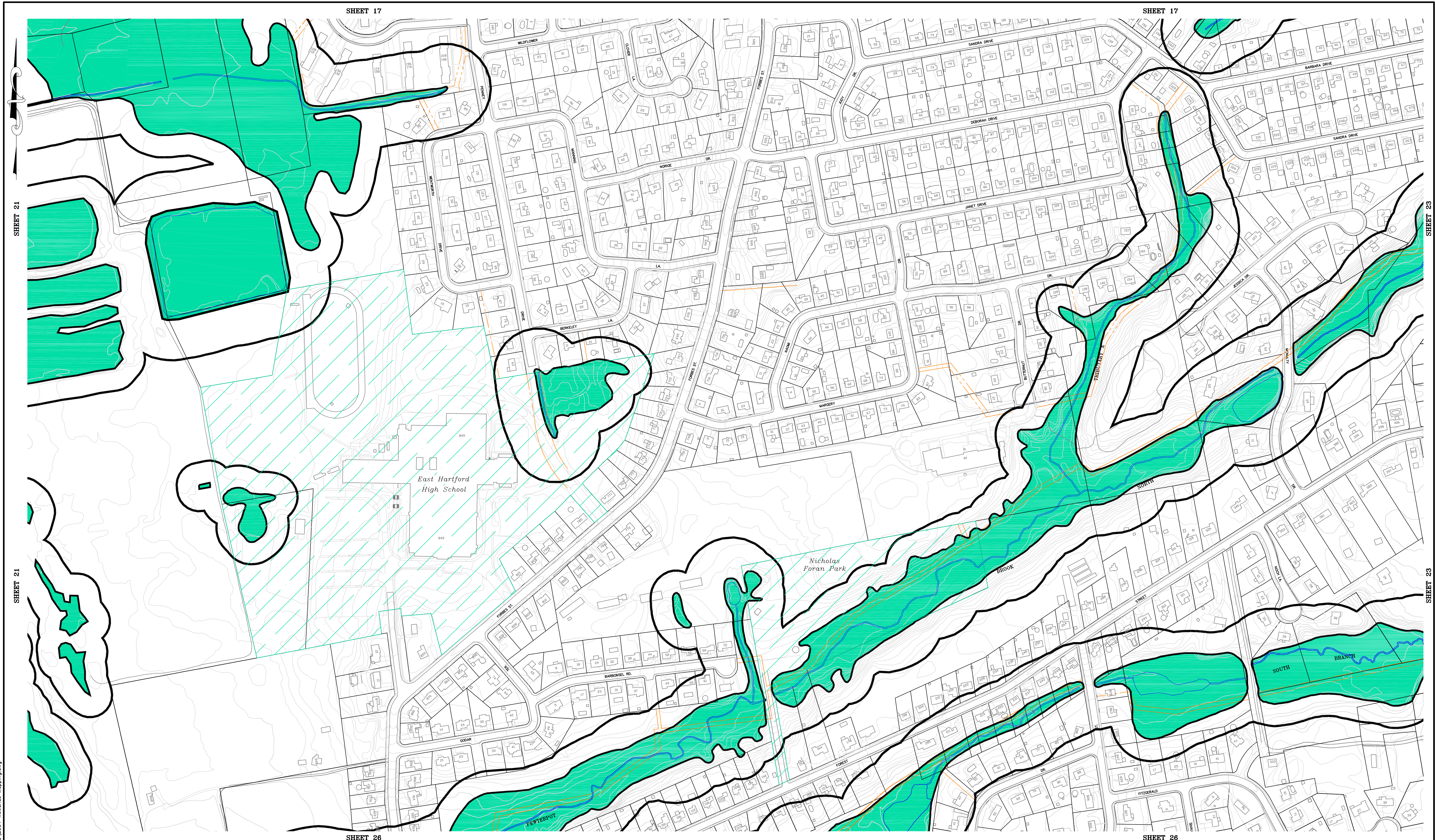


DESIGNED BY	INITIAL	DATE
DRAWN BY	A.W.T.	4/2005
CHECKED BY		

DRAWING: H:\Town Hall\Wetlands\WME AutoCAD\2004 Wetlands Mapping.dwg



BUFFER ZONE REGULATIONS ADOPTED JULY 1990.

\*Please be advised that these Inland Wetlands Maps are only advisory, and areas not within these designated boundaries may be subject to the jurisdiction of the Inland Wetlands Commission.\*

ADOPTED BY THE INLAND WETLANDS COMMISSION OF THE TOWN OF EAST HARTFORD, CONNECTICUT.  
EFFECTIVE DATE: \_\_\_\_\_  
CHAIRMAN: \_\_\_\_\_

**LEGEND**  
 LIMIT OF INLAND WETLANDS  
 LIMIT OF BUFFER ZONE

NO.	DATE	DESCRIPTION	BY

<b>INLAND WETLANDS AND WATERCOURSES</b>				
LOCATED WITHIN THE TOWN OF EAST HARTFORD, CT				
PREPARED BY: TOWN OF EAST HARTFORD ENGINEERING DIVISION 740 MAIN STREET EAST HARTFORD, CONNECTICUT				
PROJECT NO.	DATE	SCALE	DRAWN BY	SHEET NO.
—	4-29-05	1"=200'	A.W.T.	22 OF 34