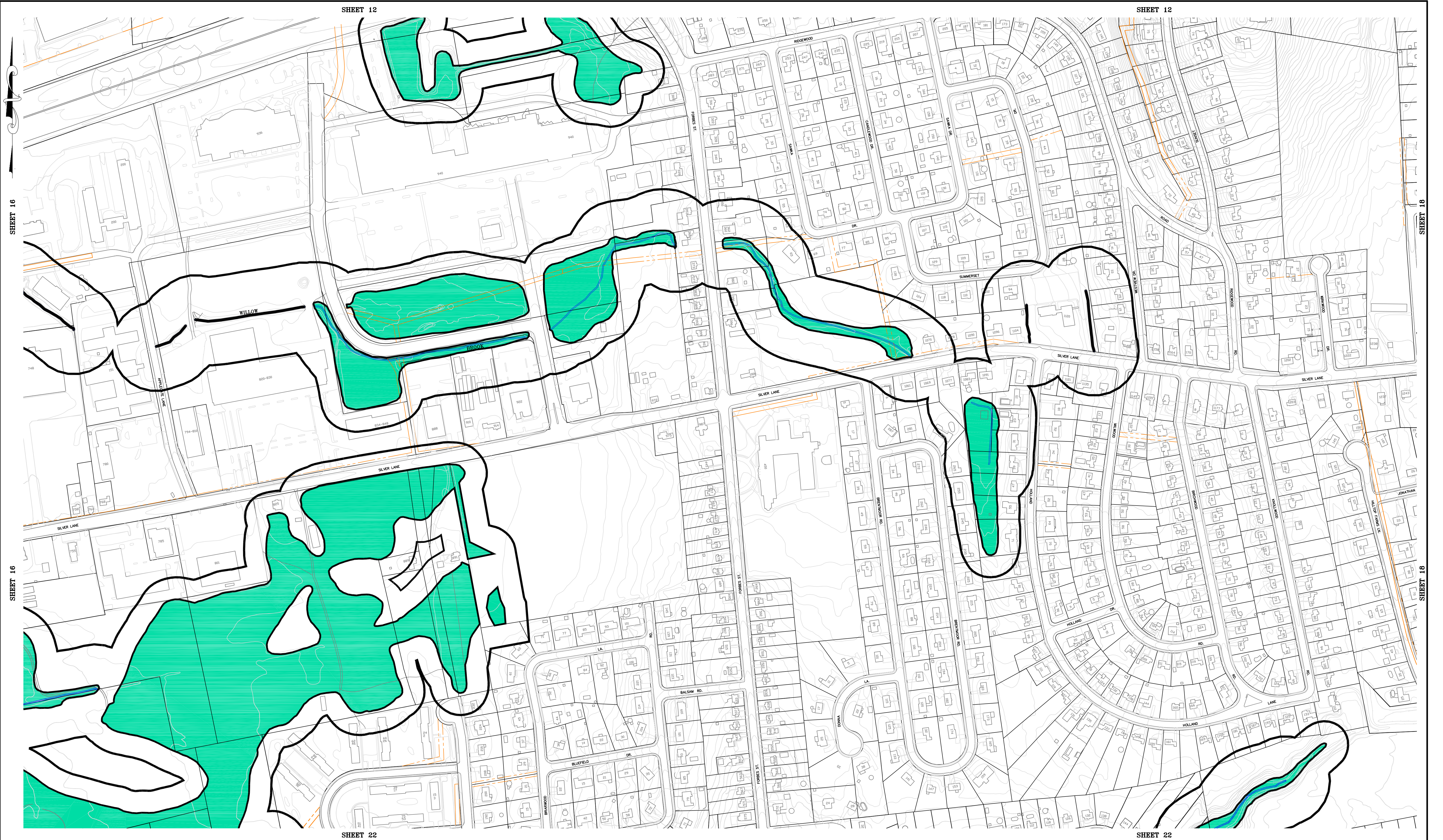


DESIGNED BY	INITIAL	DATE
DRAWN BY	A.W.T.	4/2005
CHECKED BY		

DRAWING: H:\Town Hall\PE\Engin\PE Autocad\2004 Wetlands Mapping.dwg



BUFFER ZONE REGULATIONS ADOPTED JULY 1990.

"Please be advised that these Inland Wetlands Maps are only advisory, and areas not within these designated boundaries may be subject to the jurisdiction of the Inland Wetlands Commission."

ADOPTED BY THE INLAND WETLANDS COMMISSION OF THE TOWN OF EAST HARTFORD, CONNECTICUT.  
EFFECTIVE DATE: \_\_\_\_\_  
CHAIRMAN: \_\_\_\_\_

**LEGEND**  
 LIMIT OF INLAND WETLANDS  
 LIMIT OF BUFFER ZONE

NO.	DATE	DESCRIPTION	BY

**INLAND WETLANDS AND WATERCOURSES**  
 LOCATED WITHIN THE TOWN OF  
 EAST HARTFORD, CT  
 PREPARED BY:  
 TOWN OF EAST HARTFORD ENGINEERING DIVISION  
 740 MAIN STREET  
 EAST HARTFORD, CONNECTICUT

PROJECT NO.	DATE	SCALE	DRAWN BY	SHEET NO.
	4-29-05	1"=200'	A.W.T.	17 OF 34