



Town of East Hartford

ADDENDUM N^o. 01

**Pump Repair at Meadow Hill Pump Station
Pump No. 3 143 Pitkin Street
Bid No. 21-11**

Issued January 4, 2021

The following summarizes revisions to the Bid Documents included in Addendum N^o. 01 for the Pump Repair at Meadow Hill Pump Station (Bid No. 21-11).

- Add blueprints for the 30” Worthington vertical propeller pump to the bid documents. The drawings show dimensions and details on the construction of the pump, impeller, and associated equipment.

The following documents & drawings are attached and included in Addendum N^o. 01:

Revised Drawings

- Add the following drawings to Appendix A “Record Drawings – Equipment”:

| Page | Title | Drawing No |
|--------------------|--|-------------------|
| 119a of 119 | 30” Propeller Pump Lubricating Arrangement | RY-69324 |
| 119b of 119 | 30” – Vertical Propeller Pump Sectional Elevation | RW-68834 |
| 119c of 119 | 30” Vert Propeller Pump Elevation | RW-71521 |

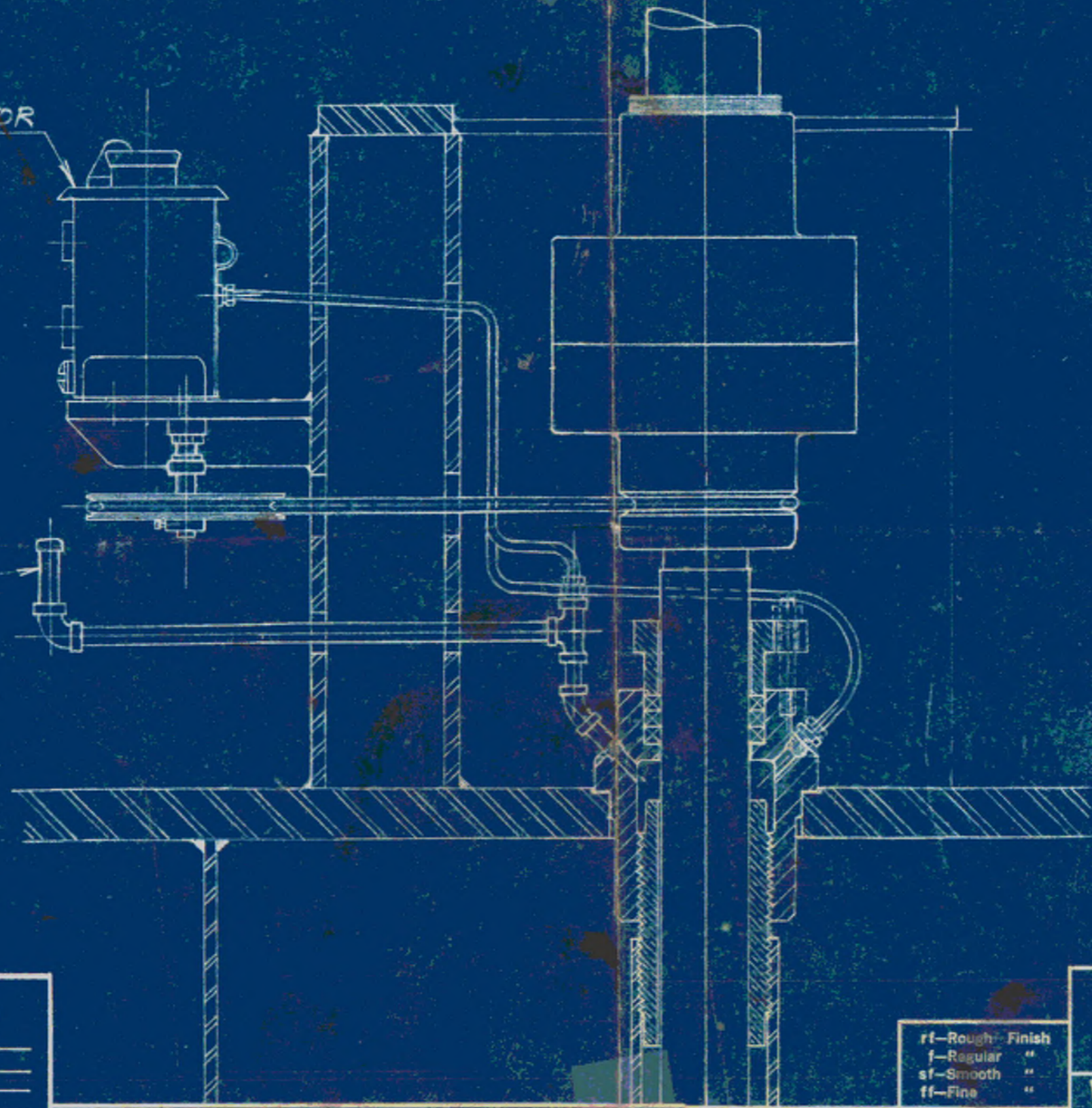
End of Addendum N^o. 01

RY-69324

| PART NO. | NO. OF PIECES FOR ONE | NAME OF PART | MAT. | PATT. NO. |
|----------|-----------------------|--------------|------|-----------|
| | | | | |
| | | | | |
| | | | | |
| | | | | |
| | | | | |

MADISON KIPP 2-FEED LUBRICATOR
MODEL 50-PR.# 05428

FILLER & VENT PIPING



Rec - 1-30-42
725

Meadow Hill

APPROVED FOR CONSTRUCTION
HOEL, S. BISHOP, JR
LT. COL. Corps of Engineers
District Engineer

CHECKED BY *[Signature]* PER _____
APP. RECOM. _____ T.S. BURNS, Prin. Engr.
DATE *1-29-41* Chief, Engr. Div.

PLEASE NOTE
THIS PRINT IS MERELY FOR PRELIMINARY USE UNLESS FOLLOWING SPACES ARE FILLED.

CORRECT FOR CUSTOMER'S ORDER _____
CUSTOMER _____
BRANCH OFFICE ORDER _____ OUR SHOP ORDER _____
APPROVED BY _____ DATE _____

Dimensions are from drawings, castings may vary slightly. Foundation bolts must not be fixed rigidly until machine is in place. This print is loaned subject to return on demand and under condition that it is not to be used in any way detrimental to our interests.

The quotation accompanying this drawing covers the material exactly as shown and any changes required. To secure prices quoted, order should refer to _____ at scale; additional dimensions will be furnished upon request.

ADDENDUM NO. 1

ALT. DATES

rf-Rough Finish
f-Regular "
sf-Smooth "
ff-Fine "

Tolerances for detail drawings:
Finished fractional dimensions where no limits given $\pm \frac{1}{64}$
" Decimal " " " " $\pm .005$
Where closer tolerances required limits are specified.
This note does not apply to Elevations.

30 PROPELLER PUMP
LUBRICATING ARRANGEMENT

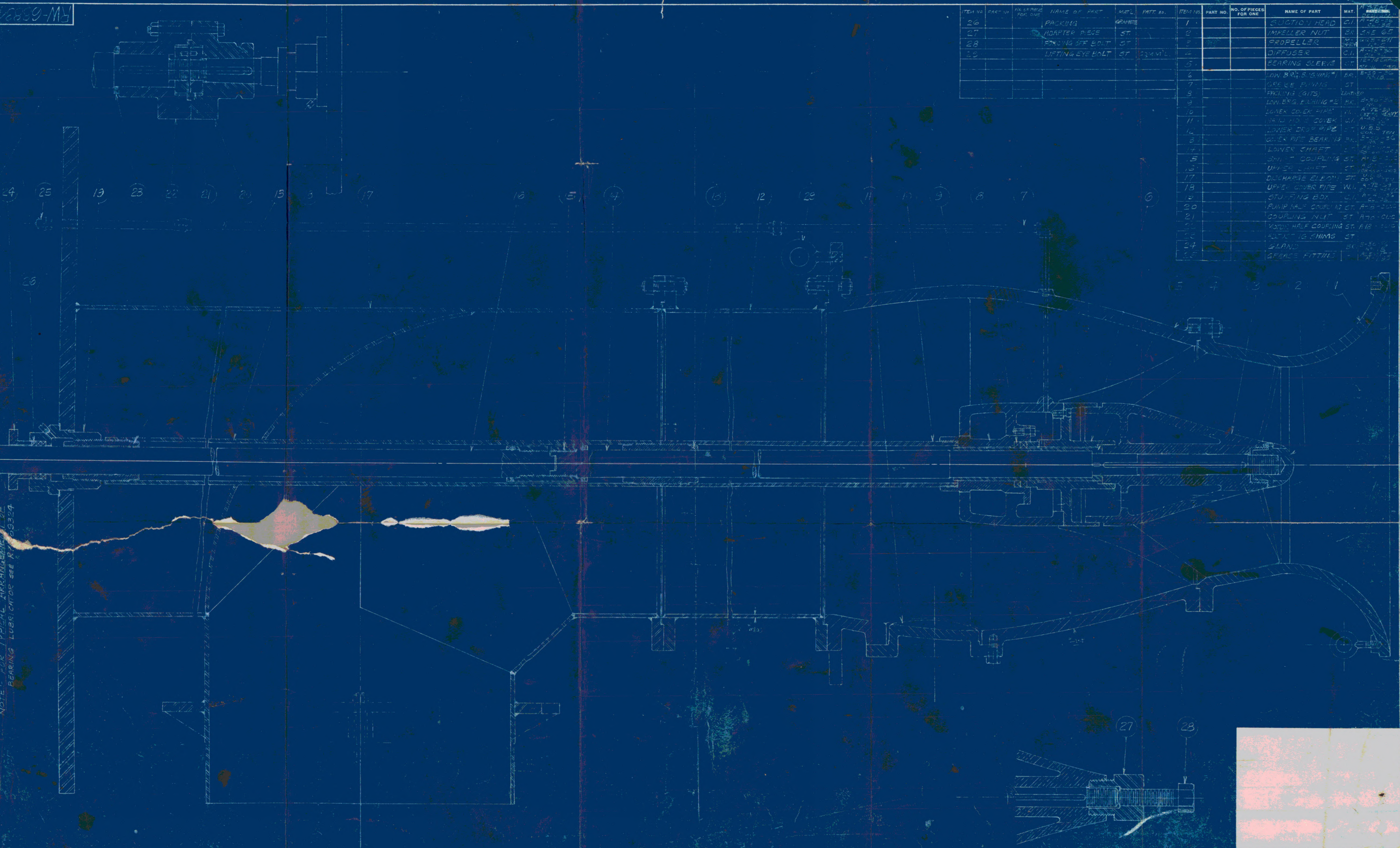
WORTHINGTON PUMP AND MACHINERY CORPORATION
HARRISON, NEW JERSEY

ORDER *P-210087* DATE *11-27-40* SCALE *3* INS. = 1 FOOT

DRAWN *[Signature]* CHECKED *[Signature]* APPROVED *[Signature]* RY-69324

FW-68834

| ITEM NO. | PART NO. | NO. OF PIES FOR ONE | NAME OF PART | MATL. | PATT. NO. | ITEM NO. | PART NO. | NO. OF PIES FOR ONE | NAME OF PART | MAT. | REVISION |
|----------|----------|---------------------|------------------|----------|-----------|----------|----------|---------------------|--------------------------|--------|----------|
| 26 | | | PACKING | GRAPHITE | | 1 | | | SUCTION HEAD | CI | A-1 |
| 27 | | | ADAPTER PIECE | ST | | 2 | | | IMPELLER NUT | BR | A-2 |
| 28 | | | SPRING OFF BOLT | ST | | 3 | | | PROPELLER | CI | A-3 |
| 29 | | | LIFTING EYE BOLT | ST | CRAM'L | 4 | | | DIFFUSER | CI | A-4 |
| | | | | | | 5 | | | BEARING SLEEVE | CI | A-5 |
| | | | | | | 6 | | | LOW BRG. BUSHING #1 | BR | A-6 |
| | | | | | | 7 | | | UPPER PUMING | ST | A-7 |
| | | | | | | 8 | | | PACKING GAITS | LEATHR | A-8 |
| | | | | | | 9 | | | LOW BRG. BUSHING #2 | BR | A-9 |
| | | | | | | 10 | | | LOWER COVER PIPE | CI | A-10 |
| | | | | | | 11 | | | FIELD HO. COVER | CI | A-11 |
| | | | | | | 12 | | | LOWER DROP PIPE | ST | A-12 |
| | | | | | | 13 | | | COVER PIPE BEARING | BR | A-13 |
| | | | | | | 14 | | | LOWER SHAFT | CI | A-14 |
| | | | | | | 15 | | | SHAFT COUPLING | ST | A-15 |
| | | | | | | 16 | | | UPPER SHAFT | CI | A-16 |
| | | | | | | 17 | | | DISCHARGE ELBOW | ST | A-17 |
| | | | | | | 18 | | | UPPER COVER PIPE W/ A-TB | CI | A-18 |
| | | | | | | 19 | | | STUFFING BOX | CI | A-19 |
| | | | | | | 20 | | | PUMP HALF COUPLING | ST | A-20 |
| | | | | | | 21 | | | COUPLING NUT | ST | A-21 |
| | | | | | | 22 | | | WOOD HALF COUPLING | ST | A-22 |
| | | | | | | 23 | | | ADJUSTING SHIMS | ST | A-23 |
| | | | | | | 24 | | | GLAND | BR | A-24 |
| | | | | | | 25 | | | GREASE FITTING | CI | A-25 |



NOTE: FOR TYPICAL ARRANGEMENT OF BEARING LUBRICATOR SEE RY-68324

FOR ELEVATION, SEE RX-68825

FOR DWIGHT PUMPING STATION, CHICOPEE, MASS.

PLEASE NOTE
 THIS PRINT IS MERELY FOR PRELIMINARY USE UNLESS FOLLOWING SPACES ARE FILLED.
 CORRECT FOR CUSTOMER'S ORDER. DWIGHT STATION - CHICOPEE
 CUSTOMER - U.S. ENGINEERS - PROVIDENCE, R.I.
 BRANCH OFFICE ORDER - Boston - 88313 OUR SHOP ORDER - CHICOPEE
 APPROVED BY: _____ DATE: 10-9-40
 FOUNDATIONS AND FOUNDING CASTINGS MAY VARY SLIGHTLY. FOUNDATION BOLTS MUST NOT BE FITTED TIGHTLY UNLESS SPECIFIED. THIS PRINT IS LOANED SUBJECT TO RETURN ON DEMAND AND UNDER NO CIRCUMSTANCES IS TO BE USED IN ANY WAY DETRIMENTAL TO OUR INTERESTS.
 TO SECURE PRICES QUOTED, ORDER SHOULD REFER TO THE MATERIAL EXACTLY AS SHOWN AND ANY CHANGES MADE. TO SECURE PRICES QUOTED, ORDER SHOULD REFER TO THE MATERIAL EXACTLY AS SHOWN AND ANY CHANGES MADE. TO SECURE PRICES QUOTED, ORDER SHOULD REFER TO THE MATERIAL EXACTLY AS SHOWN AND ANY CHANGES MADE.

ALT. DATES
 A ADDED DATE FOR LUBRICATOR ARRANGEMENT
 B J.L.D. 11/10 J.L.D. 1-28-40

FF-Rough Finish
 F-Regular
 S-Smooth
 FF-Fine

30" VERTICAL PROPELLER PUMP SECTIONAL ELEVATION
 WORTHINGTON PUMP AND MACHINERY CORPORATION
 HARRISON, NEW JERSEY

Tolerances for detail drawings:
 Finished fractional dimensions where no limits given ± 1/16
 Decimal " " " " ± .005
 Where closer tolerances required limits are specified.
 This note does not apply to Elevations.

ORDER P-21087 DATE 10-9-40 SCALE 3" = 1 FOOT
 DRAWN BY J.L.D. CHECKED BY J.L.D. APPROVED BY J.L.D.
 RW-68834

ADDENDUM NO. 1

Page 119b of 119
 Bid No. 21-11 Repair of Pump No. 3
 Meadow Hill Pump Station

