



EXPERIENCE | Transportation

Planning & Zoning Commission October 9, 2019

CRCOG

CAPITOL REGION
COUNCIL OF GOVERNMENTS



Introduction

- ▶ A Vibrant Future for Silver Lane!
 - CRCOG Transportation Study
 - Brownfields Area-Wide Redevelopment (BAR) Study
 - Working Cities Challenge



Meeting Outline

- ▶ Mayor's Introduction
- ▶ Existing Conditions
- ▶ Future Traffic Forecasting
- ▶ Recommended Alternatives
- ▶ Q&A

Presentation Outline

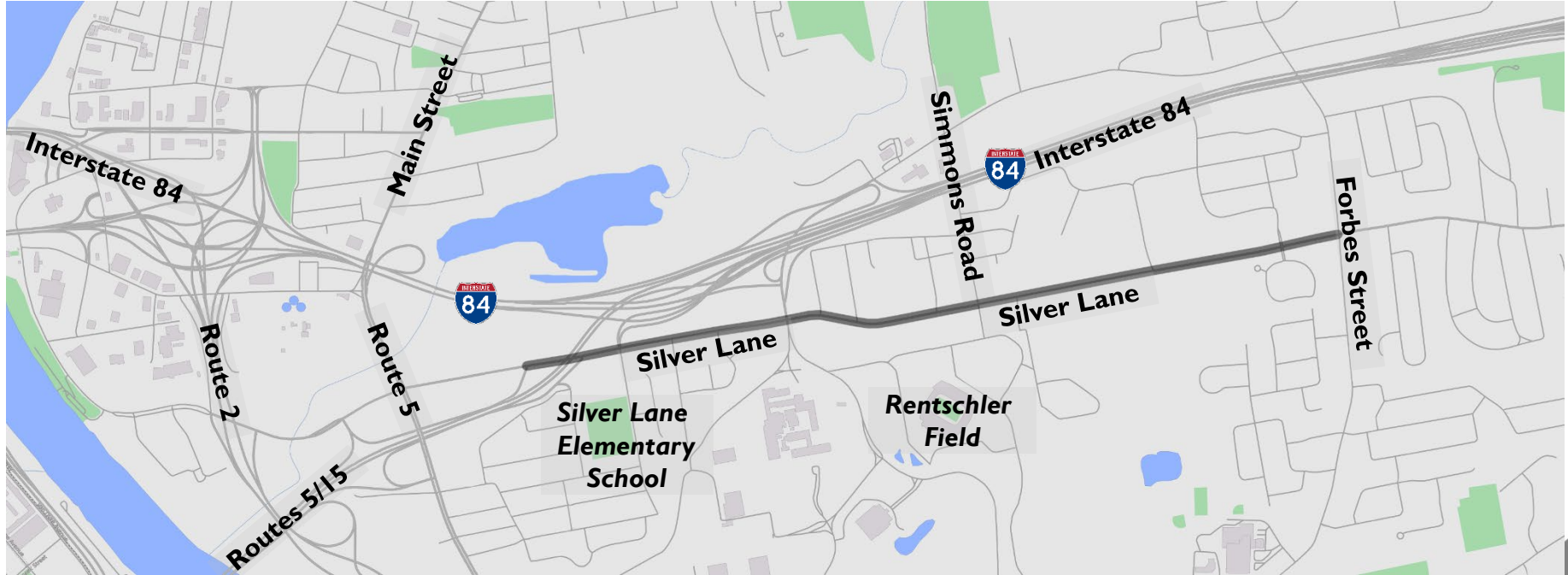
- ▶ Introduction
- ▶ BAR Grant Study Recap
- ▶ Transportation Study
 - Future Traffic Conditions
 - Preliminary Alternatives
- ▶ Next Steps & Implementation

Introduction



Introduction

► Study Area



Public Outreach

- ▶ Prior Public Meetings
 - January 30, 2018
 - June 7, 2018
 - April 30, 2019
- ▶ Advisory Committee
- ▶ Stakeholder Meetings
- ▶ CTDOT Coordination

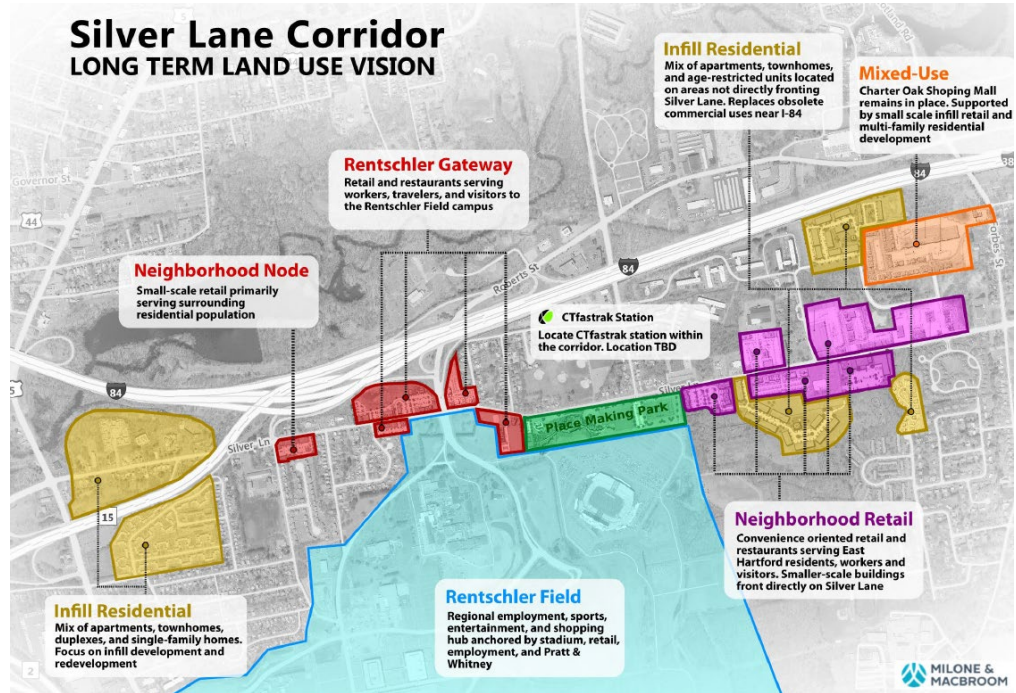


BAR Grant Study Recap



BAR Grant Study Findings

- Presented at prior public meetings
- Finalized and adopted by Town – Summer 2018



Vision Statement

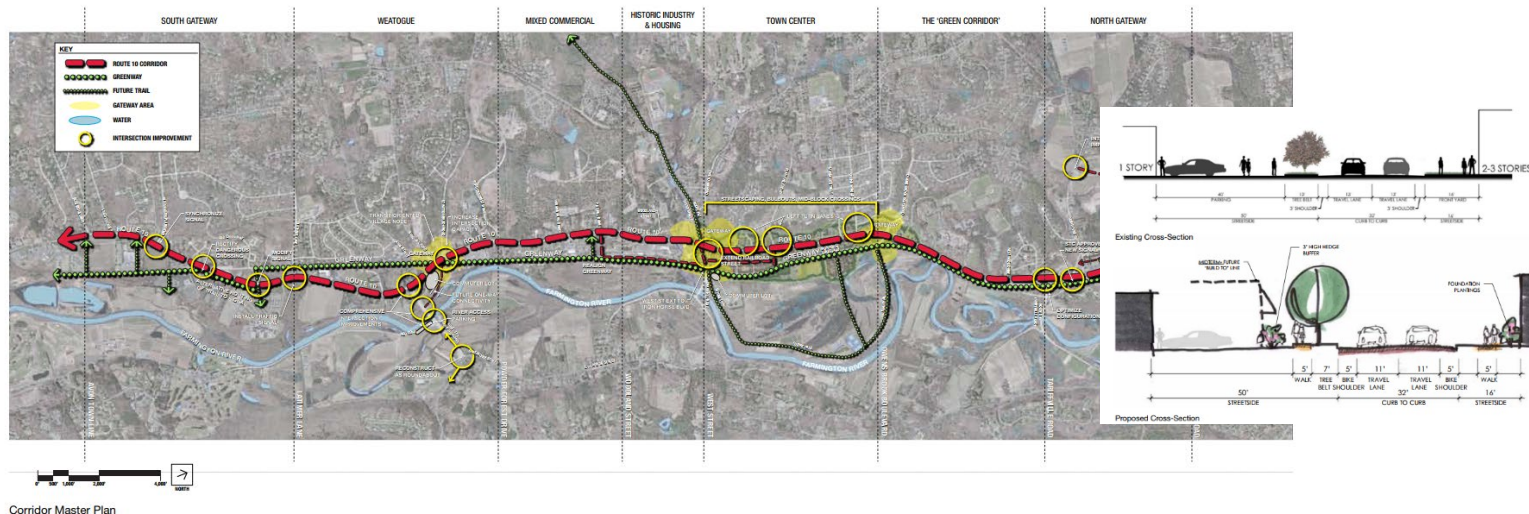
Silver Lane is East Hartford's premiere **live, work, learn, play** neighborhood. The corridor offers a diversity of **well-paying jobs** and **housing opportunities**; a robust network of **transit** and **recreational** opportunities; easy **connections to Downtown** Hartford; and serves as a regional **shopping, sports and entertainment** destination.

Transportation Study

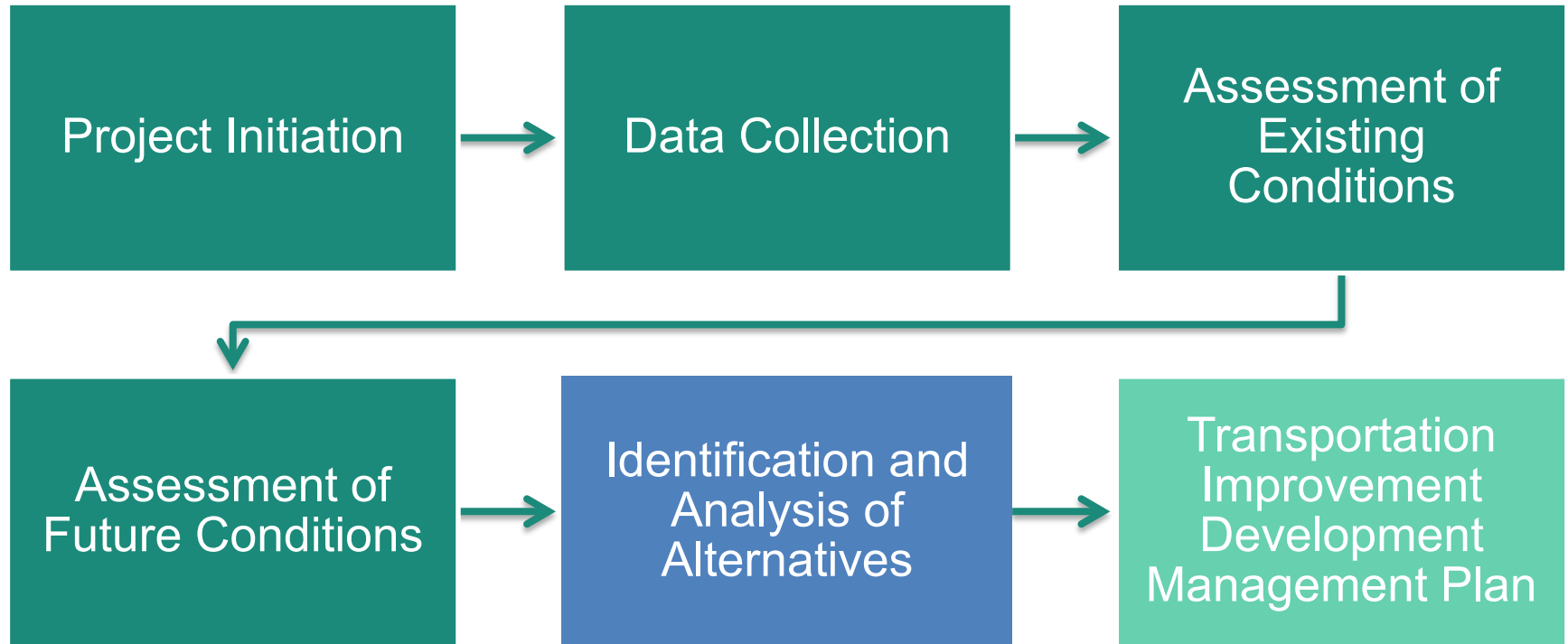


Introduction

- What is a corridor study?
 - A multi-modal planning process to prepare a master plan for a transportation corridor

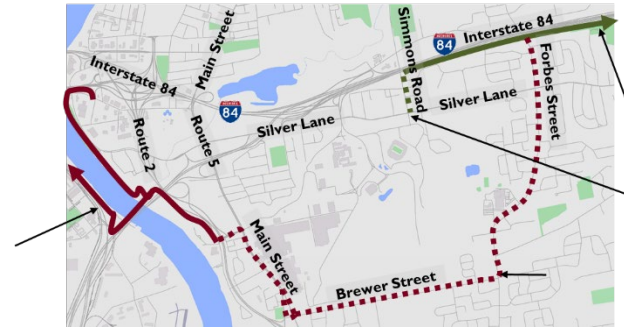


Study Process



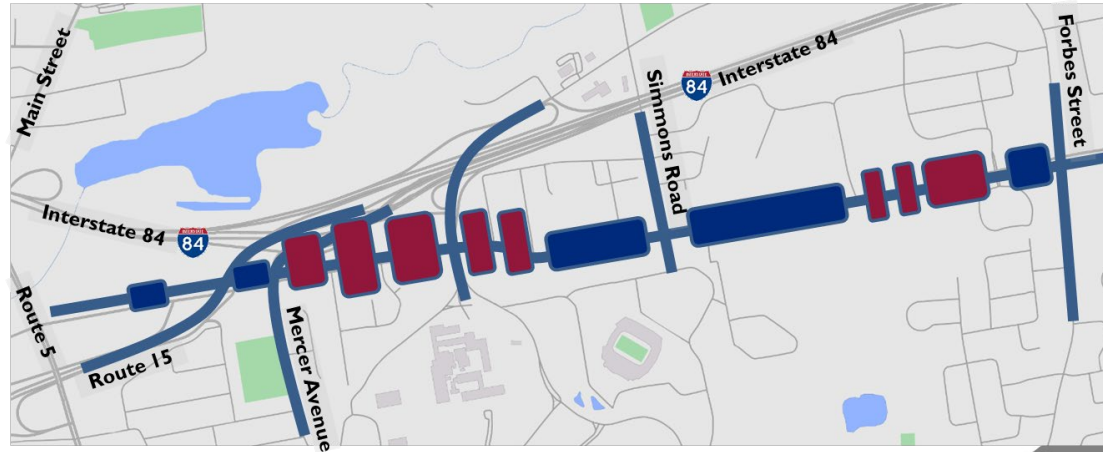
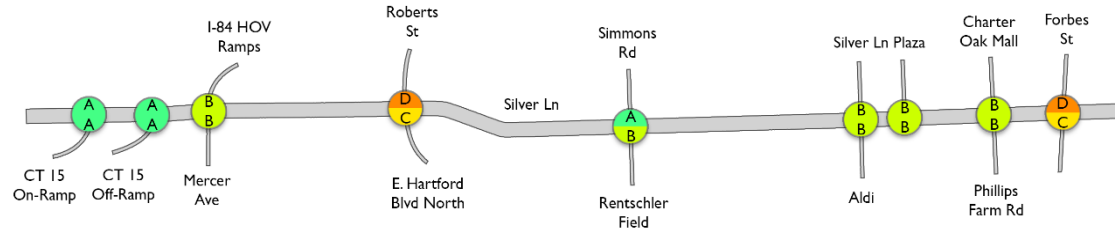
Summary of Existing Conditions

- ▶ Better multimodal accommodations needed
- ▶ Transit amenities
- ▶ Sidewalk gaps
- ▶ Bicycle facilities
- ▶ Multi-use trail connection



Summary of Existing Conditions

- ▶ Minor Arterial
- ▶ Acceptable traffic operations
- ▶ Crash rates elevated in certain corridors



Traffic Forecasting 101

► No-Build & Build

Assumptions

- What do we think will happen?
- What do we want to make happen?

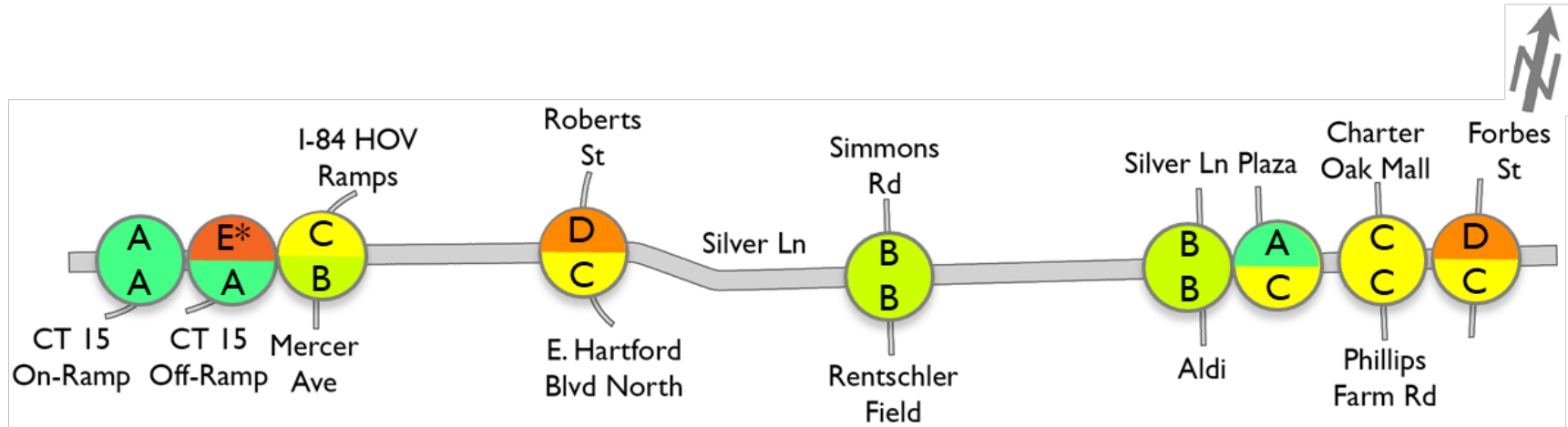
Develop Inputs

- How many people will live there?
- How many people will work there?

Traffic Forecast

- Uses background growth
- Adds new inputs
- Model output cross-referenced with existing counts

Summary of Future Conditions



Legend:



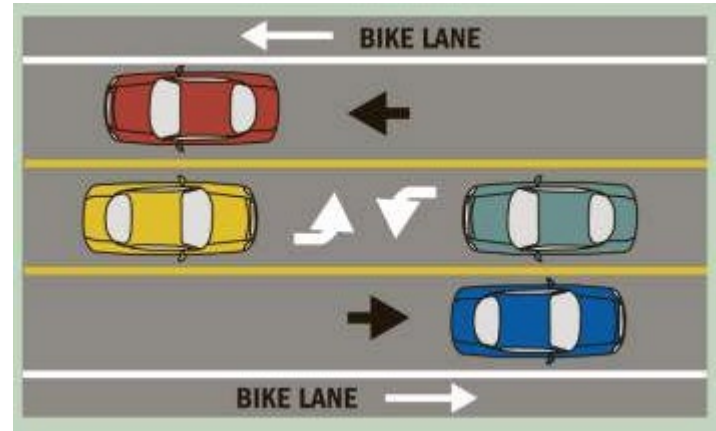
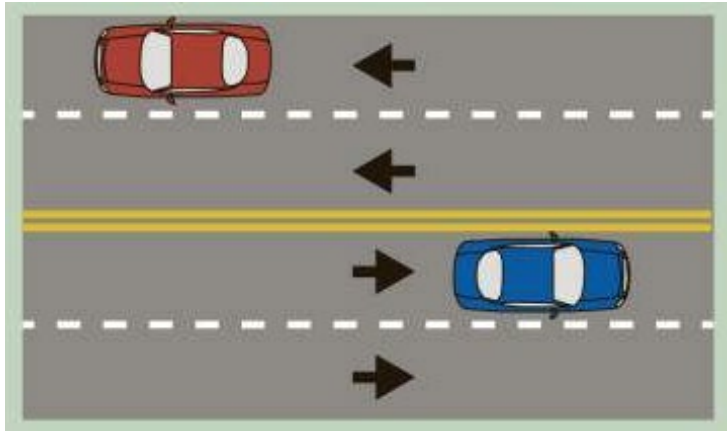
Weekday PM Level of Service

Weekend Midday Level of Service

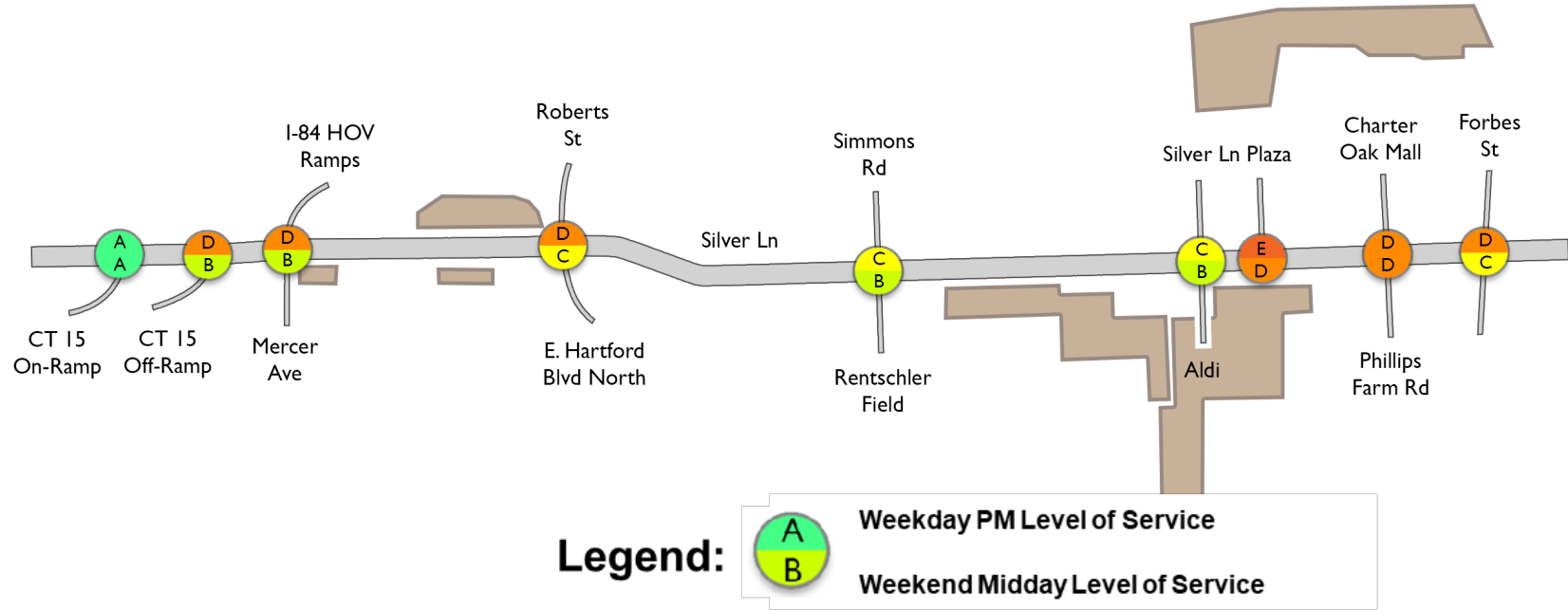
Potential Road Diet

► Road Diet Concept

- Provides extra shoulder and/or bike lane
- Provides better space utilization for turning lanes



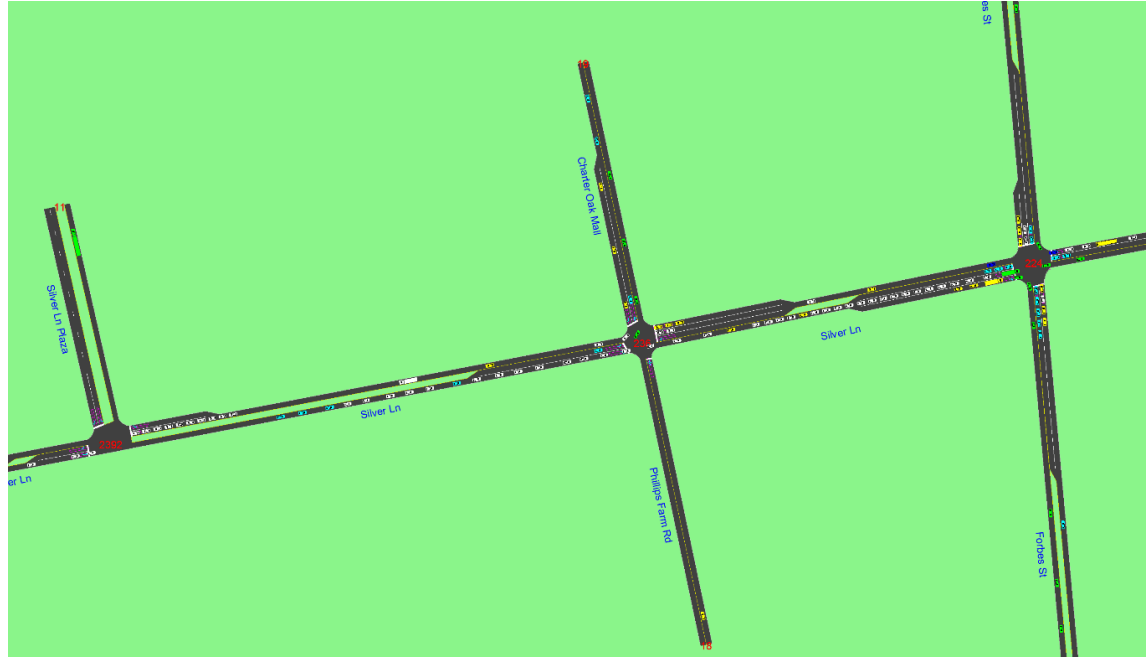
Future Operations with Road Diet



Conceptual Improvements

Any downsides?

- ▶ Longer queues at signals
- ▶ Additional turn lanes needed in some locations



Recommended Alternatives

► Corridor-wide:

- Lane use improvements including road diet
- Sidepaths along both sides for bicyclists and pedestrians
- Transit stop reductions with enhanced amenities
- Access management

Lane Use Improvements

- ▶ West of Roberts – Two Way Left Turn Lane



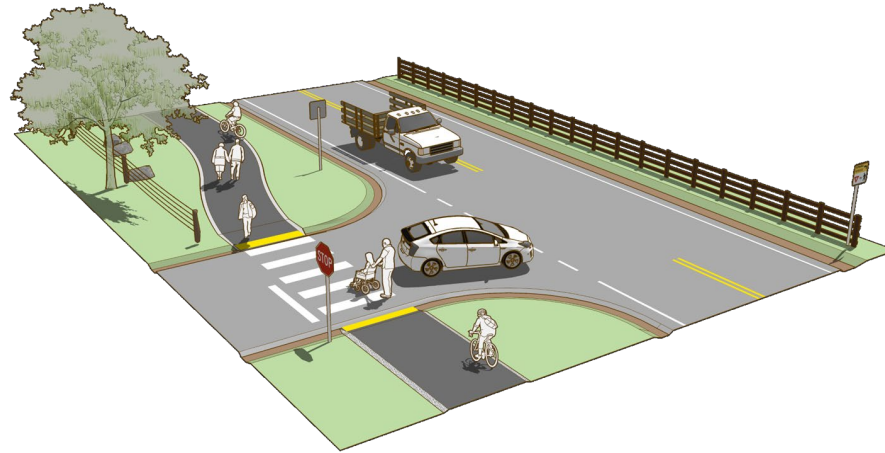
Lane Use Improvements

► East of Roberts – Road Diet (4 → 3)



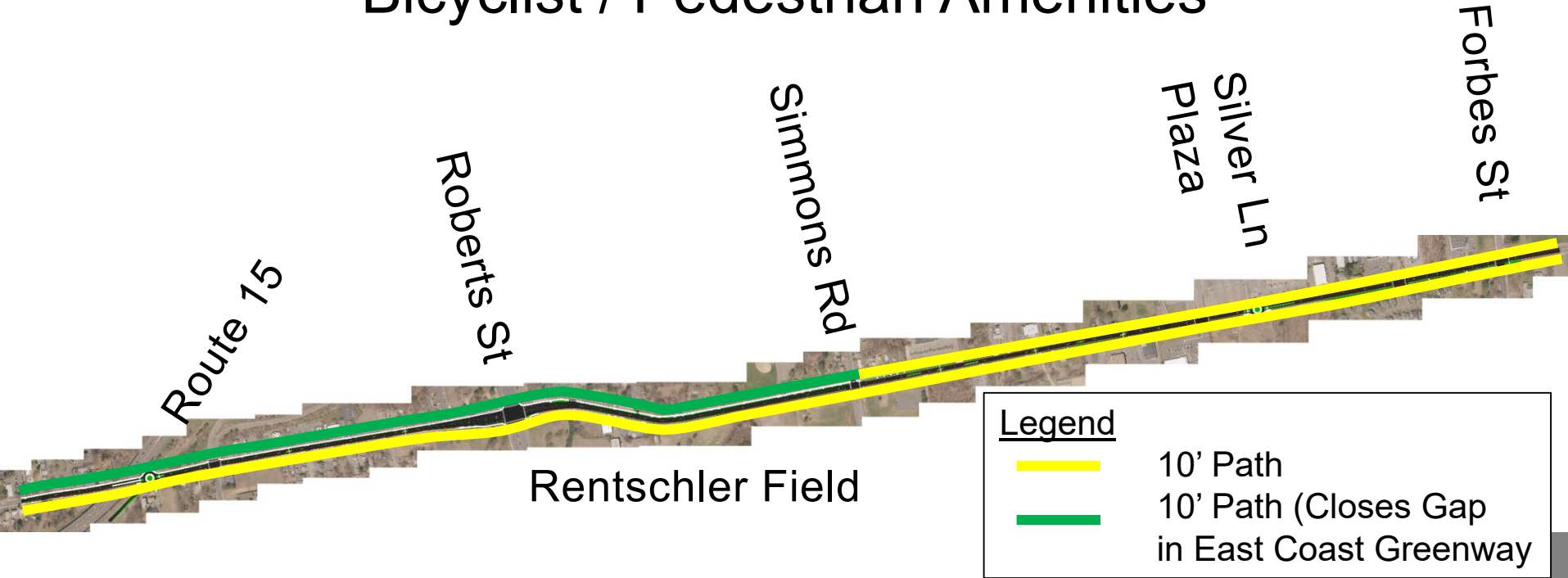
Bicyclist / Pedestrian Facilities

- ▶ Initial alternatives included a mix of facilities
- ▶ Through stakeholder coordination final recommendation is 10' sidepaths



Bicyclist / Pedestrian Facilities

Bicyclist / Pedestrian Amenities

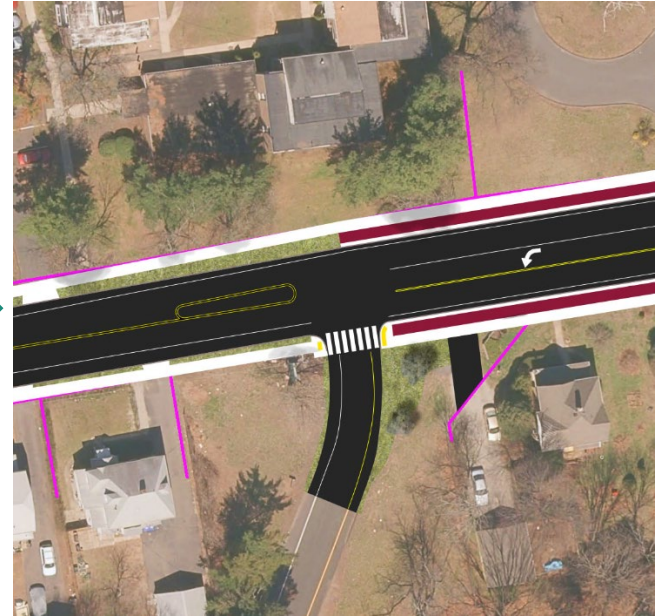
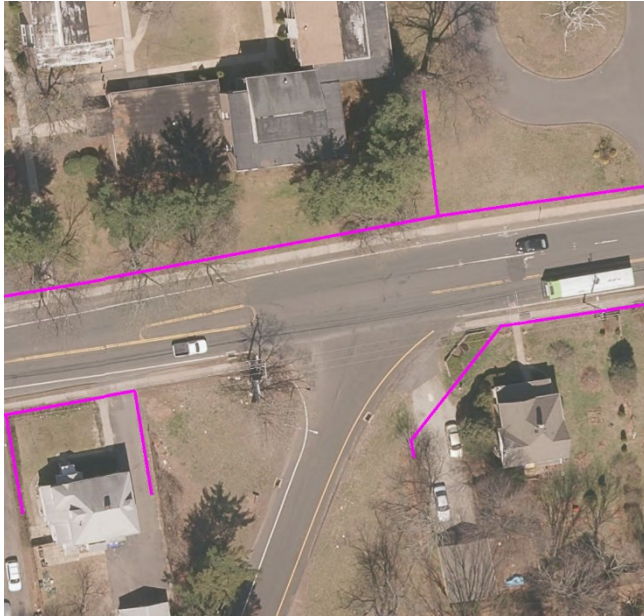


Transit Recommendations



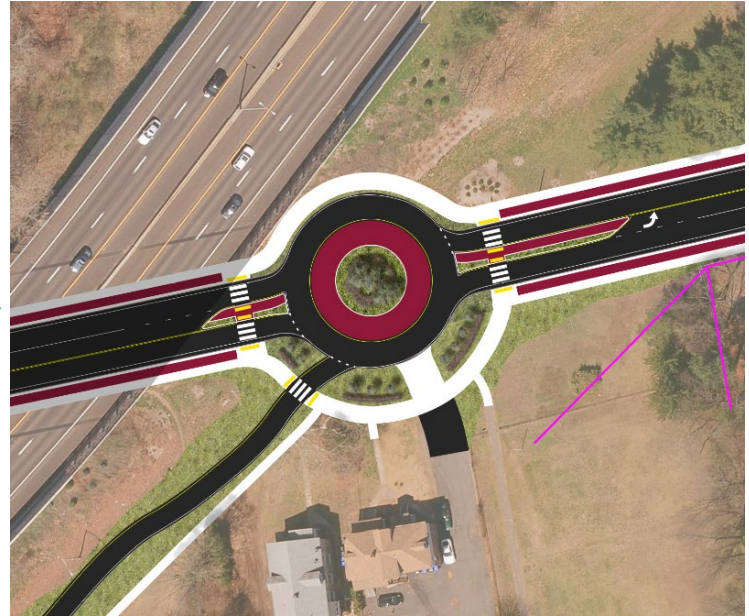
Conceptual Improvements

Route 15 On-Ramp



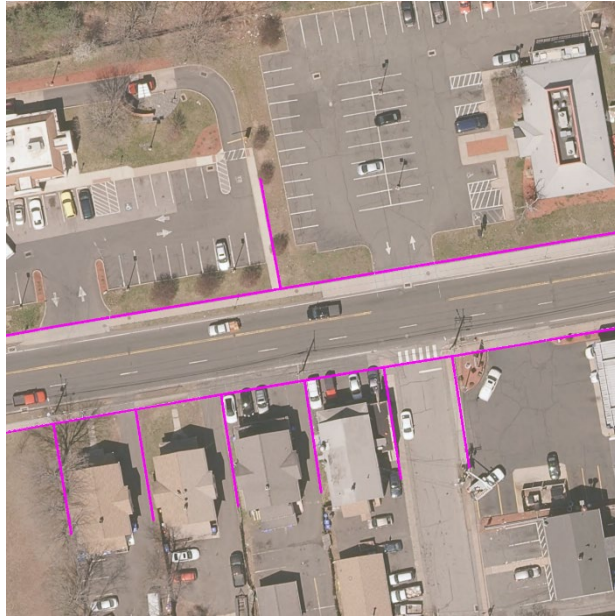
Conceptual Improvements

Route 15 Off-Ramp



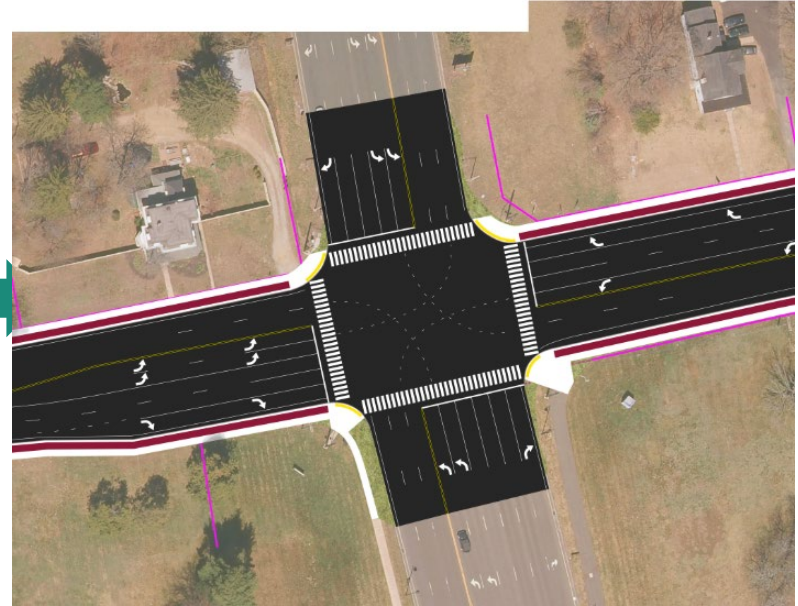
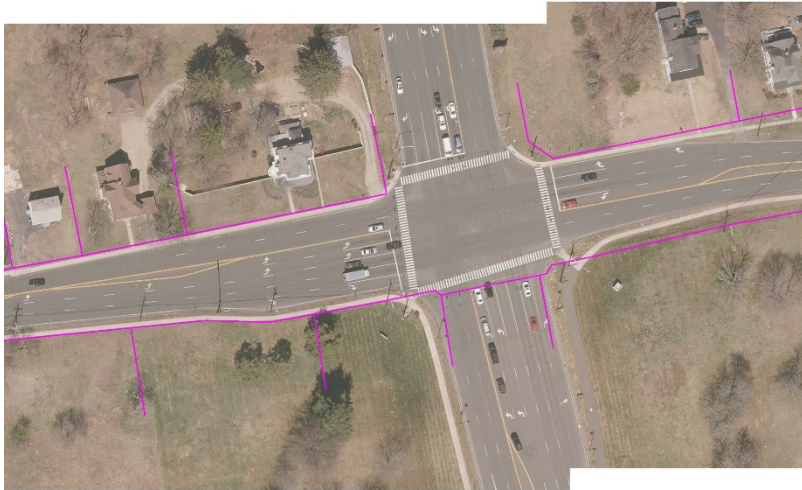
Conceptual Improvements

Typical Western Segment (Mercer to Roberts)

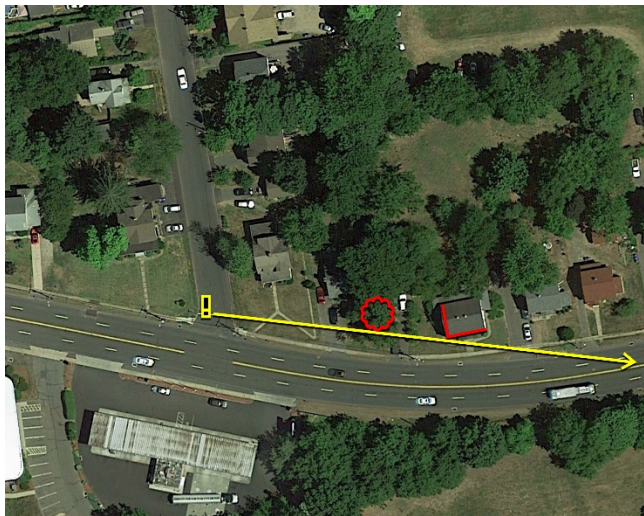


Conceptual Improvements

Roberts Street / East Hartford Boulevard



Gold Street

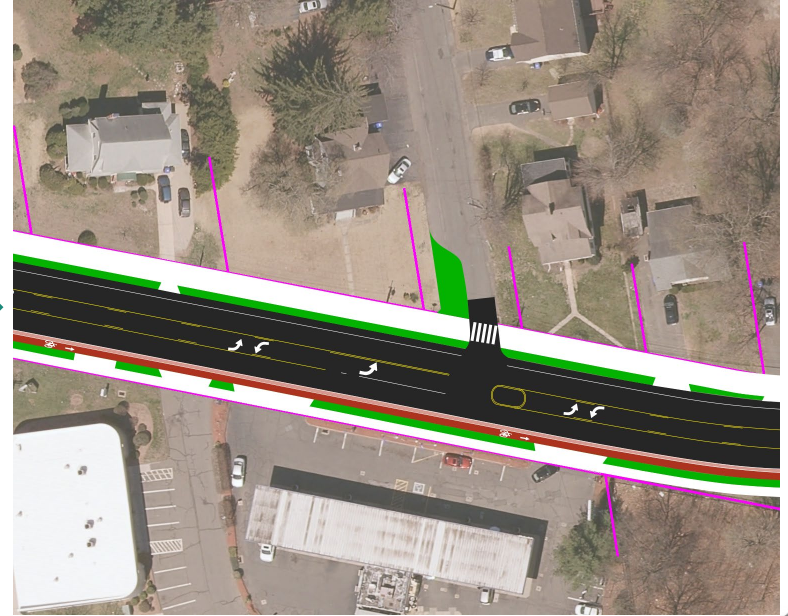
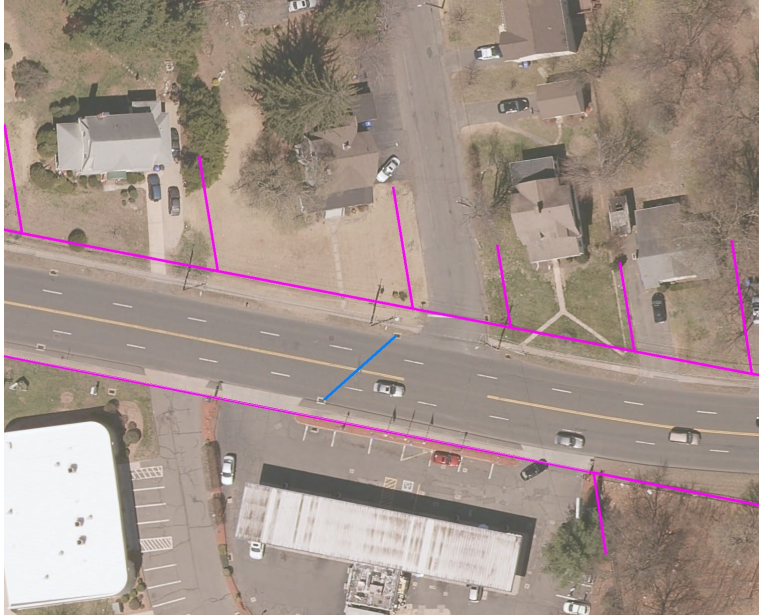


Gold Street



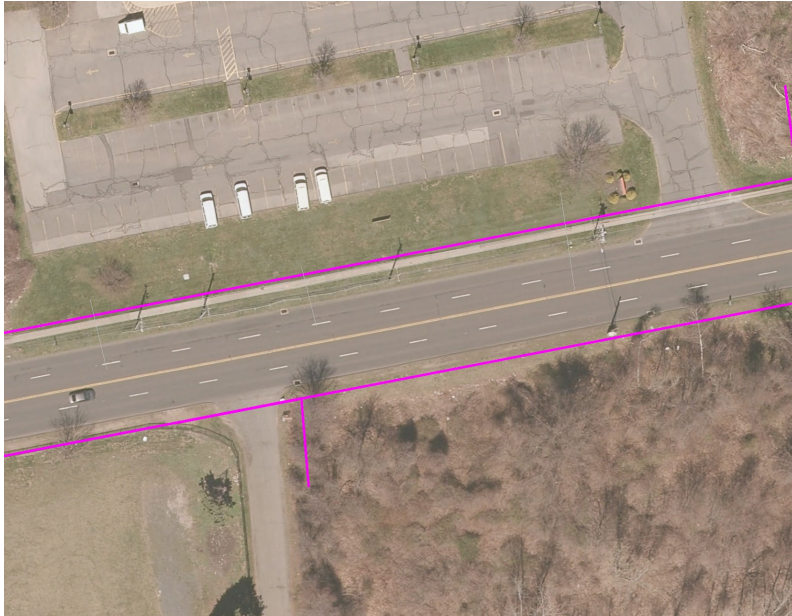
Conceptual Improvements

Gold Street



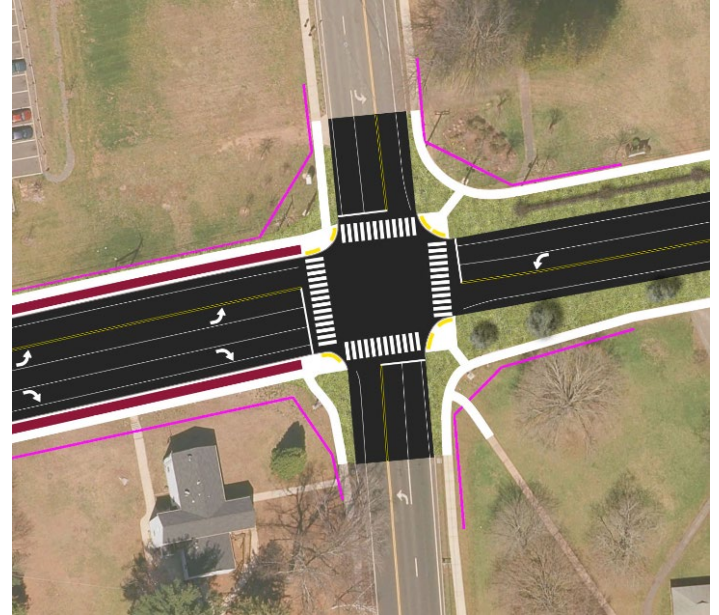
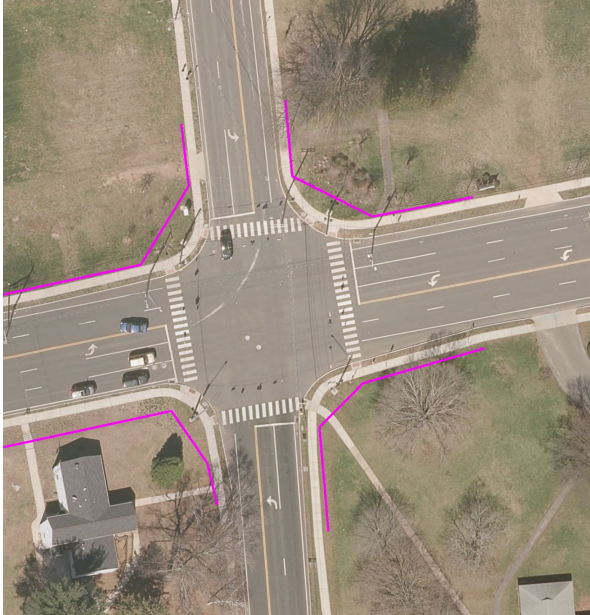
Conceptual Improvements

East of Rentschler Field



Conceptual Improvements

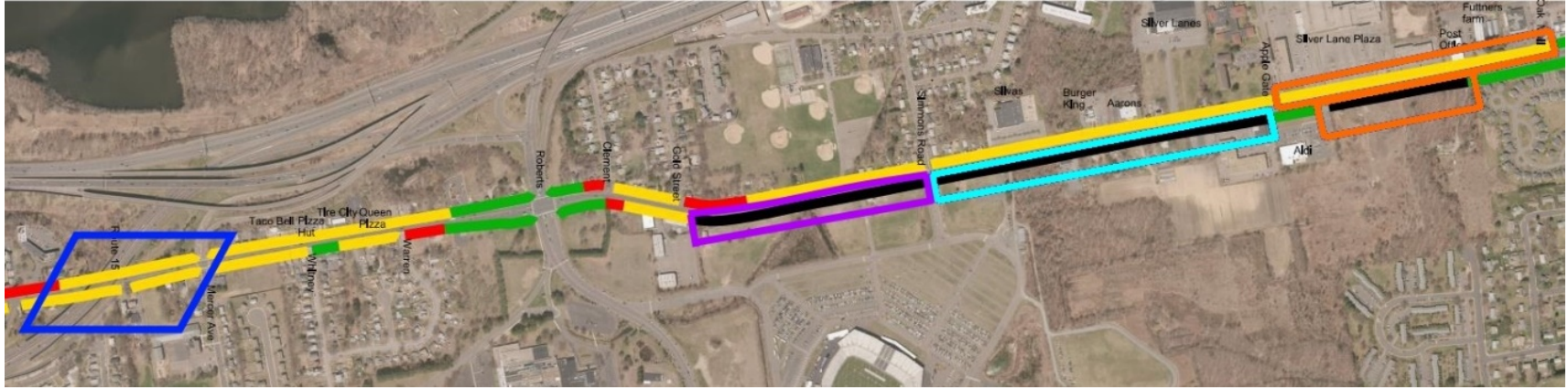
Forbes Street






Next Steps & Implementation



CRDA Complete Streets



	Area Near Silver Lane Elementary School	2,100'
	Charter Oak Mall, Silver Lane Plaza, Aldi	2,650'
	Aldi to Simmons Road	1,700'
	Rentschler Field	2,000'

Next Steps

- ▶ CRCOG Transportation Committee
- ▶ CRCOG Policy Board
- ▶ Finalize and Publish Report
- ▶ Funding Opportunities
 - LOTCIP
 - Community Connectivity



That's it

Thank you for your time and attention!