



# Public Library BUDGET PRESENTATION

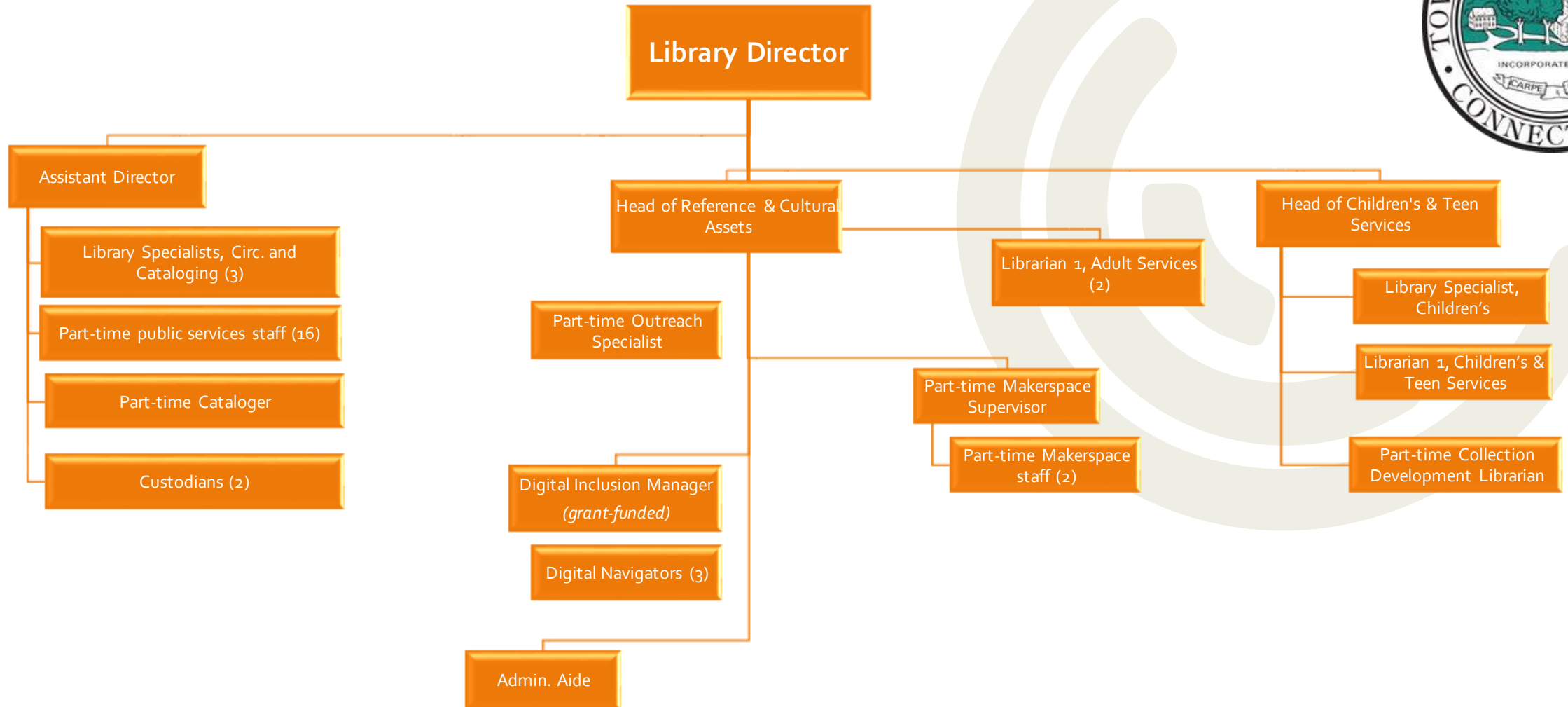
## FY 2023-2024

# ➤ SARAH KLINE MORGAN

- **Library Director since 2017**
- BA, Cornell University
- MLS, Syracuse University
- 20 years of professional library experience, including positions in Farmington, Bloomfield, Cheshire, & New Britain



# STAFFING



15 full-time staff, 25 part-time staff

# ➤ DEPARTMENT DESCRIPTION



- Free and equal access to information
- Circulating collections in a variety of formats
- Learning opportunities for all ages
- Technology access and instruction
- Programs for children, teens, and adults
- Access to cultural assets, including local history resources
- Gathering places for conversation, study, and to pursue educational and recreational interests

# ➤ ACHIEVEMENTS & ACCOMPLISHMENTS

## *Key Statistics, FY 2022*

- New library cards issued: 1,065
- Items borrowed: 58,496
- E-books/audiobooks borrowed: 10,529
- Program attendance: 6,718
- Reference questions: 4,512
- Tech help questions: 5,337
- Computer uses: 10,923





# ➤ ACHIEVEMENTS & ACCOMPLISHMENTS

## *FY23 to date (through January)*

- New library cards issued: 784
- Items borrowed: 37,146
- Program attendance: 7,832
- E-books/audiobooks borrowed: 7,064
- Reference questions: 2,401
- Tech help questions: 3,494
- Computer uses: 7,905



# ➤ CULTURE & FINE ARTS



# ➤ PROGRAMS FOR ALL AGES





# ➤ OUTREACH



# ➤ ARPA-FUNDED PROGRAM EXPANSION: DIGITAL INCLUSION



# ➤ ARPA-FUNDED PROGRAM EXPANSION: DIGITAL INCLUSION



# ➤ ARPA-FUNDED PROGRAM EXPANSION: SUMMER ENRICHMENT





# ➤ ARPA-FUNDED PROGRAM EXPANSION: SUMMER ENRICHMENT



# ➤ WICKHAM MEMORIAL LIBRARY: CONSTRUCTION



# ➤ WICKHAM MEMORIAL LIBRARY: COMPLETION



# ➤ WICKHAM MEMORIAL LIBRARY: COMPLETION





# ➤ WICKHAM MEMORIAL LIBRARY: REOPENING

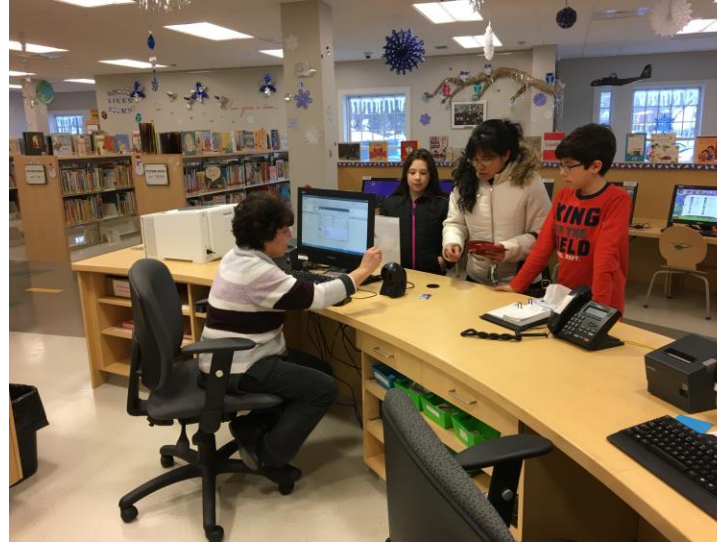


- Soft opening, April 2023
- **Hours:** M/W/F, 10 AM – 5 PM; T/Th, 1 – 8 PM
- **Full service:** library programs for all ages, public computer access (laptops), circulating collections, familiar EHPL staff, places to gather
- Digital inclusion program focus

**Stay tuned for grand opening announcement!**

# ➤ NEW INITIATIVE: BECOMING FINE-FREE

- EHPL has not charged fines since March 2020 as a temporary pandemic response.
- **Public libraries across the country are eliminating fines.** The majority of Connecticut public libraries are now fine-free.
- **Fines are a deterrent to library use.** We want East Hartford residents to feel welcome at the library.
- **Eliminating fines has been shown to increase library usage.**
- *People will still bring their books back on time!*



# ➤ BUDGET CHANGES (1 of 2)

ORG	OBJECT	DESCRIPTION	REASON	\$ CHANGE
G2400	60110	Permanent Services	Contractual increases/1 new FT librarian	\$90,199
G2400	60121	Temporary Services	Increase in hourly rate for entry-level staff	\$3,000
G2400	62213	Dues & Subscriptions	Wickham Memorial Library service expansion	\$600
G2400	62346	Cleaning Supplies	Decrease reflects current usage	(-\$500)
G2400	63221	Printing	Increased participation in outreach events	\$250
G2400	63308	Programs	\$1000 increase represents consolidation with Small Business line	(net zero)
G2400	63312	Small Business/Financial Literacy	\$1000 decrease represents consolidation with Programs line	(net zero)
G2400	63390	Library Connection	Decrease in consortium membership fees	(-\$1,501)
G2400	64602	Computers, Printers, Peripherals	Decrease related to improved efficiency in lifecycle management	(-\$4,300)



# ➤ BUDGET CHANGES (2 of 2)

ORG	OBJECT	DESCRIPTION	REASON	\$ CHANGE
G2400	65251	Gas/oil	Wickham Memorial Library service expansion	\$2,000
G2400	65252	Light and power	Wickham Memorial Library service expansion	\$29,000
G2400	65254	Water	Wickham Memorial Library service expansion	\$6,000







**THANK YOU!**